



СРПСКИ АРХИВ
ЗА ЦЕЛОКУПНО ЛЕКАРСТВО
SERBIAN ARCHIVES
OF MEDICINE

Address: 1 Kraljice Natalije Street, Belgrade 11000, Serbia

+381 11 4092 776, Fax: +381 11 3348 653

E-mail: office@srpskiarhiv.rs, Web address: www.srpskiarhiv.rs

Paper Accepted*

ISSN Online 2406-0895

Case Report / Приказ болесника

Milomir Tufegdžić¹, Vladimir Vasić^{1,†}, Jovan Hadži-Đokić²

Renal cell carcinoma of horseshoe kidney

Карцином бубрежног паренхима на потковичастом бубрегу

¹University Medical Center Zvezdara, Department of Urology, Belgrade, Serbia;

²Serbian Academy of Sciences and Arts, Belgrade, Serbia

Received: June 17, 2020

Accepted: August 30, 2020

Online First: September 15, 2020

DOI: <https://doi.org/10.2298/SARH200617072T>

***Accepted papers** are articles in press that have gone through due peer review process and have been accepted for publication by the Editorial Board of the *Serbian Archives of Medicine*. They have not yet been copy-edited and/or formatted in the publication house style, and the text may be changed before the final publication.

Although accepted papers do not yet have all the accompanying bibliographic details available, they can already be cited using the year of online publication and the DOI, as follows: the author's last name and initial of the first name, article title, journal title, online first publication month and year, and the DOI; e.g.: Petrović P, Jovanović J. The title of the article. *Srp Arh Celok Lek*. Online First, February 2017.

When the final article is assigned to volumes/issues of the journal, the Article in Press version will be removed and the final version will appear in the associated published volumes/issues of the journal. The date the article was made available online first will be carried over.

†Correspondence to:

Vladimir VASIĆ

Marijane Gregoran 15/04, 11000 Belgrade, Serbia

E-mail: vladimirdrvasic@gmail.com

Renal cell carcinoma of horseshoe kidney

Карцином бубрежног паренхима на потковичастом бубрегу

SUMMARY

Introduction Horseshoe kidney is the most common developmental disorder of the urinary system, which involves an anomaly of kidney fusion, and occurs in 3% of the population. Kidneys are most often connected at the lower poles by fibrous or parenchymal isthmus. Renal cell carcinoma (RCC) is the most common tumor of the horseshoe kidney. Treatment involves surgical treatment that includes heminephrectomy or partial nephrectomy with different approaches. We report a case of RCC of a horseshoe kidney, located on lower pole and isthmus.

Case outline A sixty-eight-year-old patient reported to the urologist due to intermittent painless macroscopic hematuria. CT urography revealed the presence of a tumor on the right kidney measuring 85 × 90 × 60 mm, with radiological characteristics of RCC, which covered the entire lower pole of the kidney towards the isthmus. Angiography finding indicated thickened isthmus with pronounced malformation of vascular structures. The right heminephrectomy was performed with resection of the isthmus from 15 mm to healthy tissue. The isthmus was sutured in two layers with a catgut suture. Subsequently, hilar, paracaval, and interaortic lymphadenectomy were performed. The pathohistological finding indicated a tumor of renal cell origin while the resection line was free of tumor tissue, as were the lymph nodes

Conclusion RCC is the most common neoplasm of the horseshoe kidney. Treatment is surgical and involves open or laparoscopic heminephrectomy or partial nephrectomy with a transperitoneal or extraperitoneal approach.

Keywords: horseshoe kidney; renal cell tumor; nephrectomy

САЖЕТАК

Увод Потковичаст бубрег је најчешћи развојни поремећај мокраћног система који подразумева аномалију фузије бубрега и јавља се код 3% становништва. Бубрези су преко доњих полова повезани истмусом који може бити изграђен од везивног или паренхимског ткива бубрега. Карцином бубрежног паренхима (РЦЦ) је најчешћи тумор на потковичастом бубрегу. Лечење је хируршко и подразумева хеминефректомију или парцијалну нефректомију са различитим приступима. Приказујемо случај РЦЦ потковичастог бубрега, локализованог на доњем полу и истмусу.

Приказ болесника Шездесетогодишњи пацијент јавио се урологу због повремене безболне макроскопске хематурије. ЦТ урографија је показала присуство тумора на десном бубрегу, димензија 85 × 90 × 60 мм, са радиолошким карактеристикама РЦЦ-а, који је заузимао цео доњи пол бубрега према истмусу. Налаз ангиографије указивао је на задебљани истмус са израженом малформацијом васкуларних структура. Изведена је десна хеминефректомија са ресекцијом истмуса од 15 мм до у здраво ткиво. Истмус је ушивен у два слоја с *catgut* шавом. Након тога су урађене хиларна, паракавална и интерортхокавска лимфаденектомија. Патохистолошки налаз указивао је на тумор порекла бубрежних ћелија, док је линија ресекције на истмусу била без туморског ткива, као и лимфни чворови.

Закључак Карцином бубрежног паренхима је најчешћи тумор потковичастог бубрега. Лечење је хируршко и укључује отворену или лапароскопску хеминефректомију или парцијалну нефректомију са трансперитонеалним или екстраперитонеалним приступом.

Кључне речи: потковичаст бубрег; карцином бубрежног паренхима; нефректомија

INTRODUCTION

Horseshoe kidney is the most common developmental disorder of the urinary system, which involves an anomaly of kidney fusion, and occurs in 3% of the population. This anomaly occurs in the fetal period, between the fourth and sixth week of life, and occurs in 1–4 people per 1,000 births [1]. Horseshoe kidney occurs more often in men than in the female population in the ratio of 2:1. Developmental disorders of other parts of the urogenital

tract as well as other organ systems may be associated with the appearance of the horseshoe kidney. Kidneys are most often connected at the lower poles by fibrous or parenchymal isthmus, which can have its own blood vessels [2].

Renal cell carcinoma (RCC) is the most common tumor of the horseshoe kidney, but the risk of developing of this disease is similar to the risk of kidney without developmental disorders. The highest incidence of RCC is in the seventh and eighth decades of life, while the most common risk factors for RCC are tobacco exposure, obesity and hypertension. The risk of developing Wilms and tumors of transitional epithelium increases 2–6 times in horseshoe kidneys [3]. The diagnosis of horseshoe kidney is most often made accidentally due to the examination of other diseases and conditions such as arterial hypertension. Symptoms that may indicate the presence of a malignant process are hematuria and nonspecific abdominal pain. Diagnostic procedures include ultrasonographic examination, cystoscopy, angiography, computed tomography with urography and nuclear magnetic resonance of the abdomen and small pelvis [2, 3].

Treatment involves surgical treatment that includes heminephrectomy or partial nephrectomy with different approaches. These surgical procedures can be complicated by the presence of pathological vascularization and the impossibility of resection of the isthmus. We report a case of RCC of a horseshoe kidney, located on lower pole and isthmus.

CASE REPORT

A sixty-eight-year-old patient reported to the urologist due to intermittent painless macroscopic hematuria that lasted for two months. Complete blood and biochemical analyses were within the reference values. The urine culture was sterile. Arterial hypertension was common comorbidity. Ultrasonographic examination revealed a tumor mass of the right kidney measuring over 80 mm, which extended interpolarily towards the lower pole of the kidney. The lower pole of the kidney was connected to the left kidney by isthmus. Ultrasound examination indicated dilatation of the pyelocalyx system of the right kidney, while the pyelocalyx system of the left kidney was a normal finding without calculosis. Then CT urography was performed, which showed the presence of a tumor on the right kidney measuring 85 mm x 90 mm x 60 mm, with radiological characteristics of RCC, which covered the entire lower pole of the kidney towards the isthmus (Figure 1). The pyelocalyx

system of the right kidney and the initial part of the right ureter were dilated. The left pyelon and the left ureter along the entire length of the course were in order. Angiography finding indicated thickened isthmus with pronounced malformation of vascular structures (Figure 2). It was decided to perform a right heminephrectomy by extraperitoneal approach, with an enlarged lumbotomy incision and resection of rib XI (Figure 3). The right kidney with tumor mass, the right ureter, the inferior vena cava, the entire isthmus were dissected and the left ureter was identified. Then, a right heminephrectomy was performed with resection of the isthmus from 15 mm to healthy tissue. A sample of isthmus tissue from the resection line was sent for pathohistological analysis. The isthmus was sutured in two layers with a catgut suture (Figure 4). The hemostasis was correct. Subsequently, hilar, paracaval, and interaortic lymphadenectomy were performed. The postoperative course was orderly, the patient was discharged from the hospital on the tenth postoperative day. The pathohistological finding indicated a tumor of renal cell origin while the resection line was free of tumor tissue, as were the lymph nodes. After three years, a control CT finding of the abdomen, pelvis, and chest showed no local recurrence of the disease or the presence of secondary deposits.

This case report was approved by the institutional ethics committee, and written consent was obtained from the patient for the publication of this case report and any accompanying images.

DISCUSSION

Horseshoe kidney is the most common anomaly of kidney fusion and it is more common in men than in women. Its frequency is estimated at about 0.25% of the total population. Genetic predisposition has not been proven, although this anomaly has been identified in twins and siblings within the same family. The horseshoe kidney consists of two different functional kidneys on each side of the medial line of the body, which are connected to the lower poles by the isthmus. Isthmus contains blood vessels, functional tissue of the renal parenchyma, or connective tissue [4, 5].

Renal cell tumor is the most common neoplasm that occurs on the horseshoe kidney in about 50% of cases, while transitional cell carcinoma and Wilms' tumor are present in about 25% of cases. The etiological factors are not completely known, but the carcinogenesis of RCC cannot be related to the presence of a congenital defect [6]. Predisposing factors for the

development of transitional cell carcinoma of the horseshoe kidney are obstruction, chronic infection and the presence of calculosis. The tumor can be localized in any part of the kidney, but is mostly located on the isthmus [1, 6]. Back in 1976, Buntli et al. [1] presented 111 cases of tumors that developed in horseshoe kidneys, where RCC had the highest frequency. Similar data have been published in contemporary literature.

The presence of this anomaly is in most cases asymptomatic and is detected incidentally in the process of diagnosing other processes and conditions. Symptoms are associated with hydronephrosis, infection, and calculus formation. Hematuria and nonspecific abdominal pain may indicate horseshoe kidney malignancy [7]. Abdominal aortic aneurysms and ovarian tumors must be considered as differential diagnostics. Diagnosis of horseshoe kidney tumors involves the same radiological methods used in the diagnosis of physiological development of kidney disease, which include ultrasonographic examination of the abdomen and small pelvis, computerized urography, angiography and nuclear magnetic resonance of the abdomen and small pelvis [7, 8].

Cheminephrectomy is indicated for localization of tumors in the central part of the kidney, for tumors of larger dimensions, tumors in unfavorable position to the pyelocalyx system and vascular stem, in cases of thicker and highly vascularized isthmus as well as in elderly patients. Cheminephrectomy usually involves a transperitoneal approach, while in certain cases the method can be reported with an extraperitoneal lumbotomy approach [4, 9].

If the tumor mass is localized at the poles, and its dimensions do not exceed 40 mm, the method of choice is sparing surgery, partial nephrectomy, which involves extraperitoneal and transperitoneal approach, or laparoscopic method using the same approaches [10]. When setting the indication for partial nephrectomy, three important characteristics of the horseshoe kidney must be taken into account: malformations of blood vessels, parenchymal or fibrous structure of the isthmus and the anatomical position of the kidney itself [11]. In about 30% of cases of horseshoe kidney, one renal artery was observed, while a large number of vascular anomalies are found in about 70% of cases. The structure of the isthmus and the malformations of the blood vessels that supply it, have big influence on the choice of surgical method [12, 13]. In certain cases, preoperative super selective embolization of pathological blood vessels of the tumor can be performed, which enables more efficient and safer surgical treatment [14].

In the presented case, the tumor measuring over 80 mm affected the entire lower pole and the isthmus, which was extremely thickened with a large number of blood vessels, so it was decided to perform heminephrectomy by extraperitoneal approach, with an enlarged lumbotomy incision and resection of the XI rib.

RCC is the most common neoplasm of the horseshoe kidney. The incidence of this tumor on the horseshoe kidney is not higher in relation to the population with normal fetal kidney formation. Diagnostic methods and prognostic factors are the same as for kidney tumors with undisturbed development. Treatment is surgical and involves open or laparoscopic heminephrectomy or partial nephrectomy with a transperitoneal or extraperitoneal approach. Significant characteristics of the horseshoe kidney that must be taken into account: malformations of blood vessels, parenchymal or fibrous structure of the isthmus and the anatomical position of the kidney itself, which can determine the type of surgical treatment.

Conflict of interest: None declared.

REFERENCES

1. Tkocz M, Kupajski M. Tumour in horseshoe kidney - different surgical treatment shown in five example cases. *Contemp Oncol (Pozn)*. 2012;16(3):254-257. doi: 10.5114/wo.2012.29295; PMID: 23788890
2. Kongnyuy M, Martinez D, Park A, McCormick B, Parker J, Hall M. A Rare Case of a Renal Cell Carcinoma Confined to the Isthmus of a Horseshoe Kidney. *Case Rep Urol*. 2015; 3p. doi: 10.1155/2015/126409; PMID: 26185705
3. Alamer A. Renal cell carcinoma in a horseshoe kidney: radiology and pathology correlation. *J Clin Imaging Sci*. 2013;3-12. doi: 10.4103/2156-7514.109725. PMID: 23814684
4. Yecies T, Turner Ii RM, Ferroni MC, Jacobs BL, Davies BJ. Partial and hemi-nephrectomy for renal malignancy in patients with horseshoe kidney. *Can J Urol*. 2016;23(1):8156-8159. PMID: 26892057
5. Petrović M, Andrejević V, Djurasić L, et al. Tumors of the horseshoe kidney-characteristics and literature review. *Acta Chir Jugosl*. 2012;59(1):53-55. PMID: 22924304
6. Taghavi K, Kirkpatrick J, Mirjalili SA. The horseshoe kidney: Surgical anatomy and embryology. *J Pediatr Urol*. 2016;12(5):275-280. DOI: [10.1016/j.jpuro.2016.04.033](https://doi.org/10.1016/j.jpuro.2016.04.033); PMID: 27324557
7. Benidir T, Coelho de Castilho TJ, Cherubini GR, de Almeida Luz M. Laparoscopic partial nephrectomy for renal cell carcinoma in a horseshoe kidney. *Can Urol Assoc J*. 2014;8(11-12):E918-E920. DOI: [10.5489/cuaj.2289](https://doi.org/10.5489/cuaj.2289); PMID: 25553168
8. Davidovic LB, Markovic M, Kostic D, Zlatanovic P, Mutavdzic P, Cvetic V. Open repair of ruptured abdominal aortic aneurysm with associated horseshoe kidney. *Int Angiol*. 2018;37(6):471-478. DOI: [10.23736/S0392-9590.18.04039-7](https://doi.org/10.23736/S0392-9590.18.04039-7); PMID: 30256051
9. Fazio L, Razvi H, Chin JL. Malignancy in horseshoe kidneys: review and discussion of surgical implications. *Can J Urol*. 2003;10(3):1899-1904. PMID: 12892577
10. Frees SK, Mager R, Borgmann H, Jäger W, Thomas C, Haferkamp A. Standard surgery for small renal masses (<4 cm)]. *Urologe A*. 2018;57(3):280-284. doi: 10.1007/s00120-018-0583-9. PMID: 29468282
11. Shao Z, Tan S, Yu X, Liu H, Jiang Y, Gao J. Laparoscopic nephron-sparing surgery for a tumor near the isthmus of a horseshoe kidney with a complicated blood supply. *J Int Med Res*. 2020;48(6). doi: 10.1177/0300060520926736; PMID: 32489122
12. Yang QT, Hong YX, Hou GM, Zheng JH, Sui XX. Retroperitoneoscopic nephrectomy for a horseshoe kidney with hydronephrosis and inflammation: A case report. *Medicine (Baltimore)*. 2019;98(22):e15697. DOI: [10.1097/MD.00000000000015697](https://doi.org/10.1097/MD.00000000000015697); PMID: 31145283
13. Nikoleishvili D, Koberidze G. Retroperitoneoscopic Partial Nephrectomy for a Horseshoe Kidney Tumor. *Urol Case Rep*. 2017;13:31-33. DOI: [10.1016/j.eucr.2017.03.013](https://doi.org/10.1016/j.eucr.2017.03.013); PMID: 28435792
14. Shimizu K, Furube H, Michimoto K, et al. Percutaneous cryoablation for stage T1b renal cell carcinoma in a patient with horseshoe kidney. *Radiol Case Rep*. 2018;13(3):606-609. DOI: [10.1016/j.radcr.2018.02.024](https://doi.org/10.1016/j.radcr.2018.02.024); PMID: 30026885

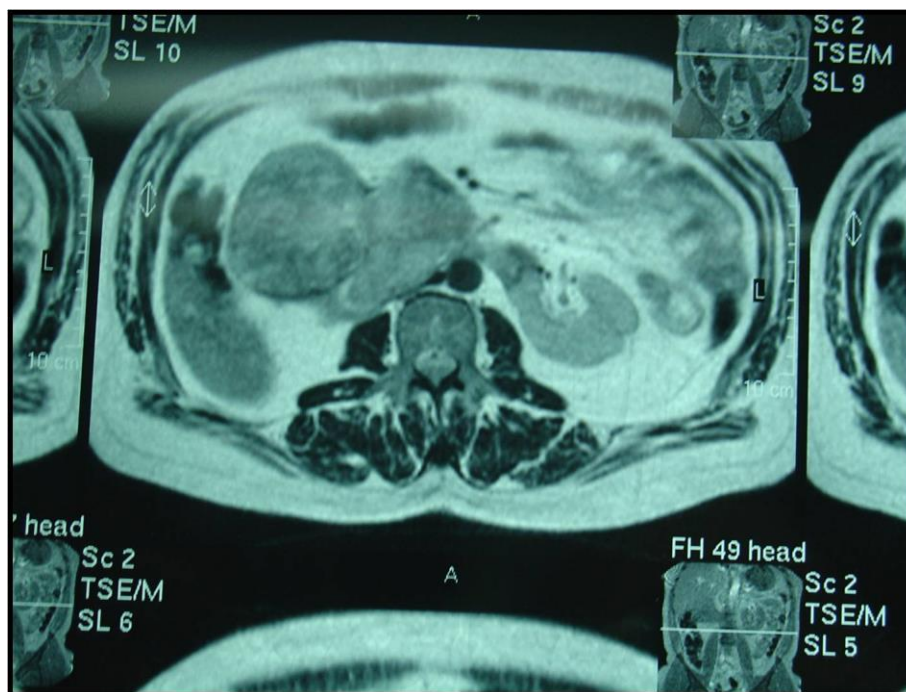


Figure 1. Computed tomography urography showed the presence of a tumor on the right kidney measuring $85 \times 90 \times 60$ mm, with radiological characteristics of renal cell carcinoma, which covered the entire lower pole of the kidney towards the isthmus



Figure 2. Angiography finding indicated thickened isthmus with pronounced malformation of vascular structures

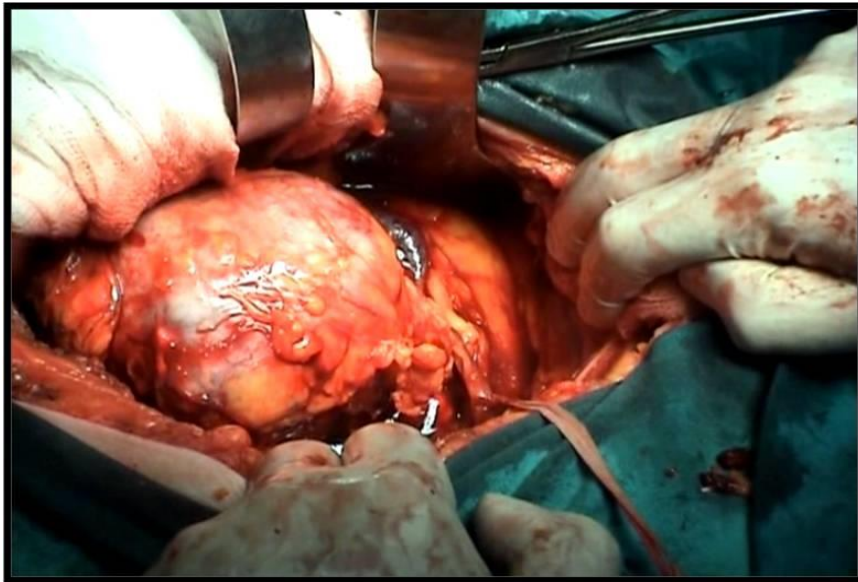


Figure 3. Right heminephrectomy by extraperitoneal approach, with an enlarged lumbotomy incision and resection of rib XI

Paper accepted

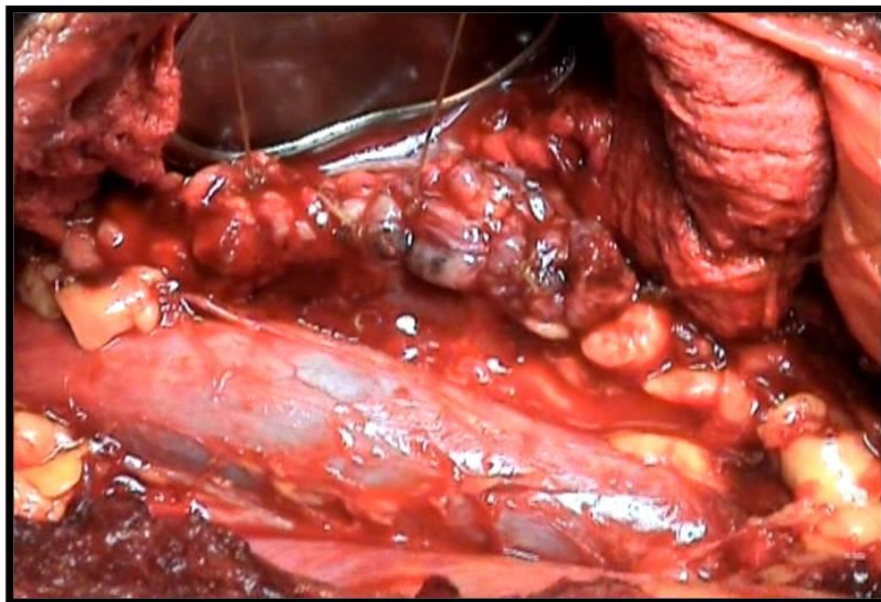


Figure 4. The isthmus was sutured in two layers with a catgut suture; hilar, paracaval, and interaorticaval lymphadenectomy were performed

Paper accepted