



Paper Accepted*

ISSN Online 2406-0895

Original Article / Оригинални рад

Narcisa Petrović-Subić^{1†}, Miroslav Kojić², Slobodan M. Janković¹,
Srđan M. Stefanović¹

Performance of calculator for diagnosing cause of liver damage

Перформансе калкулатора за дијагностику узрока оштећења јетре

¹University of Kragujevac, Faculty of Medical Sciences, Department of Pharmacology and Toxicology, Kragujevac, Serbia;

²Military Medical Academy, Clinic for Infectious and Tropical Diseases, Belgrade, Serbia

Received: May 4, 2018

Revised: September 25, 2018

Accepted: October 4, 2018

Online First: October 16, 2018

DOI: <https://doi.org/10.2298/SARH180504064P>

* **Accepted papers** are articles in press that have gone through due peer review process and have been accepted for publication by the Editorial Board of the *Serbian Archives of Medicine*. They have not yet been copy edited and/or formatted in the publication house style, and the text may be changed before the final publication.

Although accepted papers do not yet have all the accompanying bibliographic details available, they can already be cited using the year of online publication and the DOI, as follows: the author's last name and initial of the first name, article title, journal title, online first publication month and year, and the DOI; e.g.: Petrović P, Jovanović J. The title of the article. *Srp Arh Celok Lek*. Online First, February 2017.

When the final article is assigned to volumes/issues of the journal, the Article in Press version will be removed and the final version will appear in the associated published volumes/issues of the journal. The date the article was made available online first will be carried over.

† **Correspondence to:**

Narcisa PETROVIĆ-SUBIĆ

Džordža Vašingtona 4/10, 11000 Belgrade, Serbia

Email: petrovicnarcisa3@gmail.com

Performance of calculator for diagnosing cause of liver damage

Перформансе калкулатора за дијагностику узрока оштећења јетре

SUMMARY

Introduction/Objective Making a calculator which would recognize patterns of abnormal liver function tests and link them to the most probable etiology could help clinicians to make the first orientation towards definitive diagnosis in a patient with liver damage. The aim of our study was to design, construct and validate a calculator that based on pattern of abnormalities in liver function tests of a patient with liver damage would propose the most probable etiology.

Methods Patterns of abnormal liver function tests for certain etiology of liver damage were extracted from distributions of actual values taken from reports in medical literature about patients whose etiology of liver damage was proven by reliable diagnostic tests. After setting up the calculator with the patterns extracted, its diagnostic value was checked under real conditions, on a sample of patients with liver damage whose etiology was established by gold standard of diagnostics (biopsy or else). The calculator validation study was carried out at the Military Medical Academy in Belgrade during the two-year period (2015-2016).

Results For all tested diagnoses the calculator demonstrated highly significant difference between area under the Receiver-operator curves values and value of 0.5 ($p < 0.001$), and high level of sensitivity (more than 90%, except of model for chronic hepatitis) as well as relatively high specificity (more than 75%) were noted, indicating the good ability of the calculator to detect etiology of liver damage.

Conclusion New calculators showed satisfactory sensitivity and specificity for revealing major liver damage etiologies.

Keywords: medical calculator; sensitivity; specificity; etiology

САЖЕТАК

Увод/Циљ Израда калкулатора који би препознао обрасце абнормалних тестова функције јетре и повезао их са највероватнијом етиологијом могла би да помогне клиничарима код прве оријентације ка дефинитивној дијагнози код пацијената са оштећењем јетре. Циљ наше студије био је да дизајнирамо, конструишемо и валидирамо калкулатор који на основу обрасца абнормалних тестова функције јетре код пацијената са оштећењем јетре предлаже највероватнију етиологију.

Метод Образац абнормалних тестова функције јетре за одређену етиологију оштећења јетре преузет је из дистрибуције стварних вредности које су преузете из медицинске литературе о пацијентима чија је етиологија оштећења јетре доказана поузданим дијагностичким методама. После постављања калкулатора, његова дијагностичка вредност је проверена у стварним условима, на узорку пацијената са оштећењем јетре чија је етиологија установљена златним стандардом дијагностике (биопсија или друго). Студија валидације калкулатора обављена је на Војномедицинској академији у Београду током двогодишњег периода (2015-2016).

Резултати За све тестиране дијагнозе, калкулатор је показао веома значајну разлику између површине испод *ROC (Receiver-operator curves)* крива и вредности од 0,5 ($p < 0,001$), а уочен је и висок степен сензитивности (више од 90%, осим калкулатора за хронични хепатитис) као и релативно висока специфичност (више од 75%), што указује на добру способност калкулатора да открије етиологију оштећења јетре.

Закључак Нови калкулатори показали су задовољавајућу осетљивост и специфичност за откривање главних етиологија оштећења јетре.

Кључне речи: медицински калкулатор; сензитивност; специфичност; етиологија

INTRODUCTION

In patients with identified liver dysfunction, evaluation of pattern of abnormal liver function tests is usually the first step towards recognizing etiology of liver disease and establishing prognosis. In asymptomatic patients elevation of liver enzymes is frequently the first evidence of liver disease [1]. However, lack of specificity may limit diagnostic value of isolated liver function tests. Alkaline phosphatase (AP) could be elevated in both bone and liver disorders, and aminotransferases (AT) could be elevated in cardiac diseases, skeletal muscle as well as in liver diseases. During chronic

diseases such as alcoholic liver disease, serum albumin can be affected by many factors not directly related to the main cause of illness (e.g. malnutrition, malabsorption, chronic inflammation). Elevated serum values of gamma-glutamyl transferase (GGT) could reflect the liver, biliary tract and pancreas diseases [2, 3]. A prolonged prothrombin time is not specific for liver diseases and is seen in different congenital deficiencies of coagulation factors, as well as in acquired conditions. Liver function tests also lack sensitivity and in certain liver diseases like in cirrhosis, early phase can be present without liver tests abnormalities. Single liver function tests are not providing sufficient data and may not provide a specific diagnosis. Combination of tests and pattern of abnormalities can suggest a general category of hepatic dysfunction [3].

The Model for End-stage Liver Diseases (MELD) calculator uses the laboratory parameters (creatinine, bilirubin and international normalized ratio (INR)) in order to project the state of the chronic liver disease at a given moment, as well as the need for transplantation. The Pediatric Model for End-stage Liver Diseases (PELD) score is a modified formula for children up to 12 years of age. The original version was devised at the Mayo Clinic, but it has several adaptations [4, 5]. FibroTest[®], Fibrosure[®] and Enhanced Liver Fibrosis[®] are mathematical formulas used for rating the liver fibrosis [6]. A scoring system for nonalcoholic fatty liver disease (NAFLD) was designed and validated by the nonalcoholic steatohepatitis - NASH Clinical Research network. The NAFLD Activity Score (NAS) is used for assessment of any degree of the NAFLD and is under critical evaluation in many recent studies [7]. Maddrey Discriminant Function (MDF) and Glasgow alcoholic hepatitis score are used for defining severity and predicting mortality in patients with alcohol hepatitis [8]. International Autoimmune Hepatitis Group developed a scoring system for diagnostic, differential diagnostic and prognostic purposes in patients with autoimmune hepatitis (AIH). There are several adaptations of the initial scoring system. Roussel Uclaf Causality Assessment Method (RUCAM) was designed to assess likelihood causality in cases of suspected drug induced liver injury (DILI) [9]. However, none of earlier calculators was designed to reveal etiology of liver damage, which remains to be established by elaborate diagnostic algorithms.

Making a calculator which would recognize patterns of abnormal liver function tests and link them to the most probable etiology could help clinicians to make the first orientation towards definitive diagnosis in a patient with liver damage. The prerequisite for such calculator would be revealing connections between the patterns of abnormal liver tests and specific etiology, which could only be made by systematic search and analysis of published clinical studies, case series and case reports that involve liver function tests in patients with established etiology of liver damage by means of gold standard of diagnostics (usually liver biopsy).

The aim of our study was to design and construct a calculator that based on pattern of abnormalities in liver function tests of a patient with liver damage would propose the most probable

etiology. Diagnostic accuracy of the calculator will be tested on a sample of real patients suffering from various types of liver damage whose etiology was established by gold standard of diagnostics.

METHODS

This retrospective observational, cross-sectional study was designed as testing of diagnostic accuracy of an instrument (calculator) for rapid diagnostic orientation in patients with liver damage.

Main principle by which the calculator was constructed was comparing pattern of abnormal liver function tests (i.e. certain combination of abnormal values of laboratory parameters) in a patient with distributions of patterns characteristic for certain causes of liver damage obtained from systematic search of published studies. Patterns of abnormal liver function tests for certain etiology of liver damage were extracted from distributions of actual values taken from reports in medical literature about patients whose etiology of liver damage was proven by reliable diagnostic tests (gold standards for each specific diagnosis). Comprehensive and systematic literature search in MEDLINE database dealing with the abnormal liver chemistries was conducted. The search results included 5867 publications from the categories of clinical trials, case series or case studies. The calculator was based on randomly chosen sample of 1100 publications, whose results were further weighted according to the size of a patient sample. The calculator outputs were obtained on the basis of analysis of a large number (more than 1000) of individual model results obtained by random sampling of input variable values ("bootstrapping"). Input variables were: serum alanine aminotransferase ALT (IU/L) and aspartate aminotransferase AST (IU/L) levels, serum bilirubin (mmol/L), alkaline phosphatase (IU/L), gamma-glutamyl transferase (IU/L) serum albumin values (g/L), prothrombin time (PT), long-term alcohol intake, drug or narcotics (xenobiotics) exposure, diabetes, hyperlipidemia, obesity, TSH values, intense physical effort. The calculator gives output in the form of the most probable etiology of liver damage, or diagnoses, ranked by the probability of causation: toxic and drug-induced hepatitis, chronic hepatitis, alcoholic hepatitis, nonalcoholic steatohepatitis, acute hepatitis, autoimmune hepatitis, metabolic liver disease, hyperthyroidism, heart diseases and myopathies. The calculator was built in Microsoft Excel, Version 2007, using Boolean operators, the "if - then" function and other general functions of the program.

The calculator functions according to the principle with what degree of positivity of the clinical condition parameters in patients with a liver lesion coincides with a degree in which such changes of parameters are described in scientific medical literature. Clinical condition parameters are valued binary (1 – there is a significant change, and 0 – there is no significant change), as well as parameter values within a certain described clinical entity (1- a significant change is described, 0 - no significant

change is described). Depending on what percentage of studies, from the total number of published studies, describing a particular parameter change, has determined that the parameter has changed and vice versa, i.e. if it exceeds a certain percentage threshold (of a positive or negative finding), such a parameter is assigned a value of 1 (over the threshold of positive values), 0 (over the threshold of negative values) or is not assigned at all. Finally, the combination of individual parameter values in a patient is compared with the achieved combination of parameter values described in the literature for a certain diagnosis; therefore the calculator gives the result that the clinical picture corresponds to a certain diagnosis, i.e. points to the diagnosis that most closely corresponds to the clinical picture of the patient.

Respecting established methodology and available randomly chosen sample published data, calculator for toxic and drug-induced hepatitis, chronic hepatitis; alcoholic hepatitis, nonalcoholic steatohepatitis, and autoimmune hepatitis were set up. Established calculators are presented in the Table 1.

After setting up the calculator, its diagnostic value was checked under real conditions, on a sample of patients with liver damage whose etiology was established by gold standard of diagnostics (biopsy or else).

The inclusion criteria for validation set of the patients were: a) age between 18 and 65 years; b) male or female sex; c) patients with abnormal liver function test values in whom a definitive etiology of abnormal values was set on the discharge list and / or the report of the appropriate specialist (or it was concluded that liver damage was not the cause of abnormal liver function tests).

The exclusion (non-inclusion) criteria were: a) patients with incomplete medical documentation in whom the values of the input model variables could not be determined; b) patients with normal liver function test values; c) patients under 18 and above 65 years of age; d) pregnant and lactating women; e) patients who did not sign the informed consent.

In total, out of more than 1000 screened patients, the validation set included 145 who fulfill inclusion and did not have exclusion criteria.

The calculator validation study was conducted from September 1, 2015 to February 28, 2016 at the Military Medical Academy in Belgrade. The data were collected from the medical records. Anonymity of the data used for the study was ensured by the study protocol and procedures. The patients were included in the validation group according to the "convenient" sample principle, since due to limited resources of the researchers it was not possible to choose a simple or cluster random sample. However, the sample was consecutive, i.e. all patients treated at the study site during the study time span were included in the sample. In order to avoid bias, the author who administered

calculator was blinded for results of the gold standard of diagnostics. The study was approved by Professional Board of the health facility where the study was conducted, and the Helsinki Declaration was followed as guidance.

All data were summarized with adequate descriptive statistics. Numbers and percentages were used for categorical variables, while age in years as a continuous variable, was presented as ranges (minimum-maximum values), medians and interquartile ranges (IQRs, 25th—75th percentile) since the distribution had not been normal according to Komogorov-Smirnov testing. The difference between men and women in age ranges (groups) was explored using Mann-Whitney U test. The Receiver-operator curves (ROCs) were constructed based on percentage of overlap between the patterns of abnormal liver test for certain diagnosis and actual abnormal liver tests values of the patients. The areas under the curves (AUCs) and cut-off values (Manhattan distance) with corresponding sensitivity and specificity, positive and negative predictive values (PPV and NPV, respectively), positive and negative likelihood ratios (LRs), as well as pre-test and post-test odds were calculated for each relevant diagnosis. Relative contribution of the input parameters to the most frequent diagnoses was tested by logistic regression. The significance level was set at 0.05. All analyses were performed using Statistical Package for Social Sciences (SPSS Inc., Chicago, IL) software, version 20 and online Manhattan distance calculator (available at: <http://molpath.charite.de/cutoff/>).

RESULTS

A total of 145 patients, 84 males (57.9%) and 61 females (42.1%), with median age of 50.0 years (range 18-76; 25-75% IQR = 35-78), were enrolled in the study. Median age of female participants was 52 years (range 18-70; 25-75% IQR = 40-60) and 47.5 years (range 22-76; 25-75% IQR = 35-57.5) of male patients. Significant difference between females and males in terms of age was not observed: Mann-Whitney test = 2258.50, $Z = -1$, $p = 0.224$.

Actual clinical diagnosis (as established by the “gold standard”) in the sample were expressed as a number/percentage of total: chronic hepatitis (41/28.3%), toxic and drug-induced hepatitis (33/22.8%), nonalcoholic steatohepatitis (15/10.3%), alcoholic hepatitis (11/7.6%) and autoimmune hepatitis (11/7.6%). The ROC curves for three the most relevant diagnoses are presented in Figures 1-3.

ROC curves of the other diagnoses, i.e. for nonalcoholic steatohepatitis (NASH), and autoimmune hepatitis (AIH) also showed similar results: AUC 0.98, 0.97; cut-off values 0.65, 0.77; sensitivity 93.3%, 100%; specificity 100%, and 88%, respectively.

For all tested diagnoses the calculator demonstrated highly significant difference between area under the ROC curve values and value of 0.5 ($p < 0.001$) and high level of sensitivity (more than 90%, except of model for CH) as well as relatively high specificity (more than 75%) were noted, indicating the good ability of calculator to detect etiology of liver damage. The additional results of validation of the calculator are shown in the Table 2.

Binary logistic regression model for toxic and drug-induced hepatitis (TDIH) (Cox & Snell R Square = 0.202; Nagelkerke R Square = 0.326; Hosmer and Lemeshow Test $p = 0.050$) did not reveal significant contribution of input parameters to the diagnosis, although age and AST showed strong tendency ($p < 0.1$). On the other hand, the binary logistic regression model for chronic hepatitis (CH) (Cox & Snell R Square = 0.466; Nagelkerke R Square = 0.640; Hosmer and Lemeshow Test $p = 0.180$) showed significant contributions of AST (odds ratio = 1.005 [1.000 – 1.009], $p = 0.036$) and ALT (odds ratio = 0.984 [0.970 – 0.997], $p = 0.021$), although in opposite directions. The binary logistic regression model for alcoholic hepatitis (AH) (Cox & Snell R Square = 0.193; Nagelkerke R Square = 0.699; Hosmer and Lemeshow Test $p = 1.000$) did not reveal significant contribution of any of the input parameters to the diagnosis.

DISCUSSION

Validation of our calculator on the sample set of the patients gave satisfactory results. Given the relatively low prevalence of the tested diagnoses of hepatic damage in our patients, the obtained values of PPV and NPV point to good performance of the calculator for almost all etiologies, except for the NASH (Table 2). Calculator was the most sensitive for TDIH, AIH and NASH, while specificity was the highest for AIH and TDIH. Likelihood ratios as well as values of post-test odds indicate that the calculator increases significantly the probability of an etiology to which pattern of liver test results in an individual patient correspond, particularly when it comes to CH and TDIH (Table 2). For the five diagnoses listed in the Tables 1 and 2 the calculator could be considered as having sufficient diagnostic accuracy.

Basic etiological factors in alcohol hepatitis are oxidative stress, metabolic disorders and inflammatory responses [10]. Liver enzymes modifications are typical of alcohol abuse. The pattern entered in our calculator consisted of abnormal levels of GGT, AST, ALT, bilirubin, AP, serum albumin and PT in patients with evidence of alcohol abuse. Typical pattern of laboratory abnormalities in alcoholic liver disease observed by other authors were elevated AST and ALT (AST : ALT ratio exceeds 2); the values of AP and GGT levels are usually elevated to a variable degree; serum albumin, PT and serum bilirubin values are usually normal until the occurrence of significant

liver damage. Hypoalbuminemia occurs due to the decreased hepatic synthetic function as well as coexisting protein-energy malnutrition. The level of hyperbilirubinemia and abnormal PT reflects the severity of alcoholic hepatitis and is of prognostic value [11-13]. Scoring systems available to assess severity and prognosis of AH are Maddrey Modified Discriminant Function (MDF) based on prothrombin time (PT) and serum bilirubin concentration; Glasgow alcoholic hepatitis score (GAHS) that use variables including age, blood urea, peripheral blood leukocyte count, serum bilirubin, and PT; the MELD score using bilirubin, creatinine and international normalized ratio (INR) levels; the Lille model which combine six variables (age, renal insufficiency, albumin, PT, bilirubin, and evolution of bilirubin at day 7). Scoring systems include differing cut-offs, various clinical and laboratory parameters, so combining more than one scoring system, as well as establishing new scoring models could improve the current practice [8].

Chronic hepatitis is symptomatic, biochemical or serological evidence of continuing or relapsing hepatic disease for more than six months. Histologically it is manifested as inflammation, necrosis and fibrosis. Liver diseases leading to chronic hepatitis are viral, auto-immune, alcoholic, drug induced and cryptogenic. There are many histology scoring systems used in assessing grading and staging of liver biopsies from patients with chronic hepatitis: Knodell Histology Activity Index (HAI), the Scheuer scoring system, Ishak's system, Metavir system and Ishak modified HAI [14]. There are also commercial serum marker systems, used to detect fibrosis in the liver like: FibroTest® (multiparameter test that includes haptoglobin, bilirubin, GGT, apolipoprotein A-I and alpha-macroglobulin) or Enriched Liver Fibrosis® (ELF) test. "Egy-Score" has been developed for the noninvasive assessment of hepatic fibrosis and cirrhosis. Egy-Score has shown good sensitivity, specificity, and positive and negative predictive values, and AUROCs for predicting significant fibrosis ($\geq F2$), severe hepatic fibrosis ($\geq F3$), and cirrhosis (F4) [15]. Liver stiffness measurement (LSM) can be used to assess liver fibrosis in patients with chronic hepatitis. Our biochemical calculator used the following pattern of abnormal liver tests values for diagnosing chronic hepatitis: AST, ALT, total bilirubin, serum albumin and PT. Abnormal bilirubin level could signalized the disease is severe or advanced. Serum albumin and PT are determining severity; low serum albumin level and or prolonged PT may suggest cirrhosis and even portal hypertension. Non-invasive methods can now be used instead of liver biopsy to assess liver disease severity prior to therapy at a safe level of predictability [16].

Diagnosis of autoimmune hepatitis is based on clinical, biochemical findings, presence of histological image, autoantibodies and abnormalities of serum globulins [17]. In our study we observed abnormal levels of transaminases, AST and ALT. Elevation of liver transaminases (less than 500 UI/L) with normal alkaline phosphatase is typical in AIH. Abnormal level of alkaline phosphatase, that is disproportional to transaminase elevation, is unusual and requires investigation of

other causes of liver disease such as drug induced disease, primary biliary cirrhosis (PBC) and primary sclerosing cholangitis (PSC). International Autoimmune Hepatitis Group has proposed a scoring system of which there are several adaptations. A simplified scoring system uses serum antibodies, serum IgG levels, liver histology data and data on absence of viral hepatitis. The original revised scoring system has greater sensitivity for autoimmune hepatitis (100% vs. 95%), whereas the simplified scoring system has specificity 90% vs. 73% and accuracy (92% vs. 82%), using clinical assessment as the gold standard. AIH may overlap with primary biliary cholangitis (PBC) or primary sclerosing cholangitis (PSC). AIH could be combined with NAFLD and these patients are more likely to develop an adverse clinical outcome with poor survival. There is a subtype of DILI with autoimmune background. AIH will attract more attention because many serious issues related to it stay to be worked out [17, 18, 19].

Diagnosis of drug-induced liver disease (DILD) is based on history, blood tests, imaging examinations and, if applicable, liver biopsy. There are no specific laboratory tests, histological presentations, or clinical signs and symptoms enabling the diagnosis of DILD. Signs and symptoms vary with the drug, host, and severity of damage [20]. The manifestations of drug-induced hepatotoxicity are highly variable, ranging from asymptomatic elevation of liver enzymes to fulminant hepatic failure. CIOMS/RUCAM score reflects the likelihood that the hepatic damage is due to a specific medication. Limitations of such scoring algorithms are poor inter-rater reliability and arbitrary scoring, for example, for alcohol use [21]. Significant increase in scientific studies investigating this disorder in the last few years is making DILD an emerging safety issue. FDA established Liver Toxicity Knowledge Base (LTKB) at the FDA's National Center for Toxicological Research [22]. Based on the daily dose, lipophilicity, and formation of reactive metabolites, a DILD score algorithm has been developed. It provides a scale for assessing the severity of DILD risk in humans, associated with oral medications [23]. Patients with DILD at high risk for acute liver failure could be identified by Hy's Law. Limitations are low sensitivity but high specificity. Due to the current lack of sensitive and specific clinical tests to diagnose, predict and monitor drug-induced injury to the liver, EMA has opened a project in order to set up new biomarkers to enable earlier diagnosis, predict outcome and prognosis of DILD [24, 25]. By using well established liver serum parameters in our study, we have observed abnormal levels of ALT, AST, total bilirubin, GGT, and AP in DILD.

Nonalcoholic fatty liver disease (NAFLD) is one of the most common liver diseases that includes steatosis, steatohepatitis, and nonalcoholic steatohepatitis (NASH) and can progress to cirrhosis, liver failure, or hepatocellular cancer. Liver histology is the gold standard for diagnosing NASH [26]. Since biopsy is invasive, risky and connected to errors in obese patients, noninvasive alternatives have been established [27]. The pattern entered in our calculator consisted of abnormal

levels of AST, ALT, AP, GGT associated with hyperlipidemia, obesity and abnormal glucose metabolism (diabetes mellitus). Existing noninvasive models and scores combine clinical data (age, degree of obesity and diabetes, family history, AST: ALT ratio >1), measures of elasticity and blood tests variables (pointers of collagen metabolism, cell death (M30 CK-18), insulin resistance (adiponectin and resistin), or oxidative stress markers (thioredoxin, lipidperoxides), but have still not reached a wide clinical acceptance [28, 29].

Main limitation of our study was relatively small number of patients with certain diagnoses, so validation could have been conducted for limited etiological spectrum. Besides, low prevalence of certain diagnoses could have led to overestimate of diagnostic accuracy of the calculator in that regard. Further studies are needed to have complete picture of diagnostic value of this calculator. The calculator could be improved in the future if the full spectrum of retrieved studies is taken into account, as more complete data about laboratory parameters could increase precision of the estimate of diagnostic accuracy and its scope may be widened with a number of other diagnosis.

CONCLUSION

In conclusion, our calculator showed satisfactory sensitivity and specificity for major liver damage etiologies. It is clear that the calculator is not a substitute for elaborate diagnostic algorithms and methods already used for finding a cause of liver damage, but it could be useful tool for rapid orientation when first faced with a patient whose liver function tests are abnormal. Clinicians should not rely on this calculator for making definitive etiological diagnosis of liver damage; it should rather be considered as auxiliary, not quite precise tool for rapid screening of such patients and directing further diagnostics including gold standard, as necessary. In future this calculator should become available to clinicians as free application in smart phones, so they will be able to use it easily and rapidly whenever they first encounter a patient with abnormal liver tests.

ACKNOWLEDGEMENT

This paper is a part of a doctoral thesis.

This research was partially funded by grant No 175007, given by the Ministry of Education, Science and Technical Development of the Republic of Serbia.

REFERENCES

1. Cacciola I, Scoglio R, Alibrandi A, Squadrito G, Raimondo G. Evaluation of liver enzyme levels and identification of asymptomatic liver disease patients in primary care. *Intern Emerg Med*. 2017;12(2):181-186. doi: 10.1007/s11739-016-1535-2. PubMed PMID: 27644706.
2. Herlong HF, Mitchell MC Jr. Laboratory Tests. In: Schiff E, Maddrey W, Sorrell M, editors. *Schiff's Diseases of the Liver*. Oxford: Wiley-Blackwell; 2012. p. 17-43
3. Kwo PY, Cohen SM, Lim JK. ACG Clinical Guideline: Evaluation of Abnormal Liver Chemistries. *Am J Gastroenterol*. 2017; 112(1):18-35. doi: 10.1038/ajg.2016.517. PubMed PMID: 27995906
4. Wernly B, Lichtenauer M, Franz M, Kabisch B, Muessig J, Masyuk M, et al. Model for End-stage Liver Disease excluding INR (MELD-XI) score in critically ill patients: Easily available and of prognostic relevance. *PLoS ONE*. 2017; 12(2):e0170987. doi: 10.1371/journal.
5. Benko T, Gallinat A, Minor T, Saner FH, Sotiropoulos GC, Paul A, et al. The postoperative Model for End stage Liver Disease score as a predictor of short-term outcome after transplantation of extended criteria donor livers. *Eur J Gastroenterol Hepatol*. 2017; 29(6):716-22. doi: 10.1097/MEG.0000000000000851. PubMed PMID: 28441690
6. Stasi C, Milani S. Non-invasive assessment of liver fibrosis: Between prediction/prevention of outcomes and cost-effectiveness. *World J Gastroenterol*. 2016;22(4):1711-20. doi: 10.3748/wjg.v22.i4.1711. PubMed PMID: 26819535
7. Sanyal A, Harrison S, Ratziu V, Abdemalek M, Diehl A, Caldwell S, et al. Changes in fibrosis, but not the NAFLD Activity Score (NAS), are associated with disease progression in patients with nonalcoholic steatohepatitis (NASH) and advanced fibrosis. *J Hepatol*. 2017; 6(1):S2-S3. doi: 10.1016/S0168-8278(17)30267-2.
8. Rahimi E, Pan JJ. Prognostic models for alcoholic hepatitis. *Biomark Res*. 2015; 3:20. doi: 10.1186/s40364-015-0046-z. PubMed PMID: 26203357
9. Danan G, Teschke R. RUCAM in Drug and Herb Induced Liver Injury: The Update. *Int J Mol Sci*. 2015; 17(1). doi: 10.3390/ijms17010014. PubMed PMID: 26712744
10. Grasselli E, Compalati AD, Voci A, Vecchione G, Ragazzoni M, Gallo G, et al. Altered oxidative stress/antioxidant status in blood of alcoholic subjects is associated with alcoholic liver disease. *Drug Alcohol Depend*. 2014; 143:112-9. doi:10.1016/j.drugalcdep.2014.07.013. PubMed PMID: 25107314
11. Dasarathy S, McCullough J.A.C. Alcoholic Liver Disease. In: Schiff E, Maddrey W, Sorrell M, editors. *Schiff's Diseases of the Liver*. Oxford: Wiley-Blackwell; 2012. p. 657-701.
12. Newsome PN, Cramb R, Davison SM, Dillon JF, Foulerton M, Godfrey EM, et al. Guidelines on the management of abnormal liver blood tests. *Gut*. 2018; 67(1):6-19. doi: 10.1136/gutjnl-2017-314924. PubMed PMID: 29122851
13. Stickel F, Datz C, Hampe J, Bataller R. Pathophysiology and Management of Alcoholic Liver Disease: Update 2016. *Gut Liver*. 2017; 11(2):173-88. doi: 10.5009/gnl16477. PubMed PMID: 28274107
14. Mannan R, Misra V, Misra SP, Singh PA, Dwivedi M. A comparative evaluation of scoring systems for assessing necro-inflammatory activity and fibrosis in liver biopsies of patients with chronic viral hepatitis. *J Clin Diagn Res*. 2014; 8(8):FC08-12. doi: 10.7860/JCDR/2014/8704.4718. PubMed PMID: 25302199
15. Alboraie M, Khairy M, Elsharkawy A, Elsharkawy M, Asem M, El-Seoud ARA, et al. Egscore as a noninvasive score for the assessment of hepatic fibrosis in chronic hepatitis C: a preliminary approach. *Saudi J Gastroenterol*. 2014; 20(3):170-4. doi: 10.4103/1319-3767.133003. PubMed PMID: 24976280

16. EASL Clinical Practice Guidelines: management of hepatitis C virus infection. *J Hepatol.* 2014; 60(2):392–420. doi: 10.1016/j.jhep.2013.11.003. PubMed PMID: 24331294
17. Aizawa Y, Hokari A. Autoimmune hepatitis: current challenges and future prospects. *Clin Exp Gastroenterol.* 2017; 10:9–18. doi: 10.2147/CEG.S101440. PubMed PMID: 28176894
18. Czaja AJ. Diagnosis and Management of Autoimmune Hepatitis: Current Status and Future Directions. *Gut Liver.* 2016; 10(2):177–203. doi: 10.5009/gnl15352. PubMed PMID: 26934884
19. Arndtz K, Hirschfield GM. The Pathogenesis of Autoimmune Liver Disease. *Dig Dis.* 2016; 34(4):327–33. doi: 10.1159/000444471. PubMed PMID: 27170385
20. Fisher K, Vuppalanchi R, Saxena R. Drug-Induced Liver Injury. *Arch Pathol Lab Med.* 2015; 139(7):876–87. doi: 10.5858/arpa.2014-0214-RA. PubMed PMID: 26125428
21. García-Cortés M, Stephens C, Lucena MI, Fernández-Castañer A, Andrade RJ. Causality assessment methods in drug induced liver injury: strengths and weaknesses. *J Hepatol.* 2011; 55(3):683–91. doi: 10.1016/j.jhep.2011.02.007. PubMed PMID: 21349301
22. Sarges P, Steinberg JM, Lewis JH. Drug-Induced Liver Injury: Highlights from a Review of the 2015 Literature. *Drug Saf.* 2016; 39(9):801–821. doi:10.1007/s40264-016-0427-8
23. Thakkar S, Chen M, Fang H, Liu Z, Roberts R, Tong W. The Liver Toxicity Knowledge Base (LKTb) and drug-induced liver injury (DILI) classification for assessment of human liver injury. *Expert Rev Gastroenterol Hepatol.* 2018; 12(1):31–8. doi: 10.1080/17474124.2018.1383154. PubMed PMID: 28931315
24. Chen M, Borlak J, Tong W. A Model to predict severity of drug-induced liver injury in humans. *Hepatology.* 2016;64:931–940. doi: 10.1002/hep.28678. PubMed PMID: 27302180
25. Kullak-Ublick GA, Andrade RJ, Merz M, End P, Benesic A, Gerbes A, et al. Drug-induced liver injury: recent advances in diagnosis and risk assessment. *Gut.* 2017; 66(6):1154–64. doi: 10.1136/gutjnl-2016-313369. PubMed PMID: 28341748
26. Liu W, Baker RD, Bhatia T, Zhu L, Baker SS. Pathogenesis of nonalcoholic steatohepatitis. *Cell Mol Life Sci.* 2016; 73(10):1969–87. doi: 10.1007/s00018-016-2161-x. PubMed PMID: 26894897
27. Ratziu V, Charlotte F, Heurtier A, Gombert S, Giral P, Bruckert E, et al. Sampling variability of liver biopsy in nonalcoholic fatty liver disease. *Gastroenterology.* 2005; 128(7):1898–906. doi: 10.1053/j.gastro.2005.03.084. PubMed PMID: 15940625
28. Liang J, Liu F, Wang F, Han T, Jing L, Ma Z, et al. A Noninvasive Score Model for Prediction of NASH in Patients with Chronic Hepatitis B and Nonalcoholic Fatty Liver Disease. *Biomed Res Int.* 2017; 2017; 8793278. doi: 10.1155/2017/8793278
29. Sumida Y, Nakajima A, Hyogo H, et al. Non-invasive scoring systems for predicting NASH in Japan: evidences from Japan Study Group of NAFLD. *Integr Mol Med.* 2015; 2(2):145–49. doi: 10.15761/IMM.1000130.

Table 1. Established calculators

Diagnosis	Value of input parameters that determine diagnosis											
	ALT	AST	BIL	AP	GGT	SA	PT	DRUG	ALCO	DM	OB	HL
Toxic and drug-induced hepatitis	1	1	1	1	1	0	0	1	0	0	0	0
Chronic hepatitis	1	1	1	0	0	1	1	0	0	0	0	0
Alcoholic hepatitis	1	1	1	1	1	1	1	0	1	0	0	0
Autoimmune hepatitis	1	1	0	0	0	0	0	0	0	0	0	0
Nonalcoholic steato-hepatitis	1	1	0	1	1	0	0	0	0	1	1	1

ALT – alanine aminotransferase; AST – aspartate aminotransferase; BIL – serum bilirubin; AP – alkaline phosphatase; GGT – gamma-glutamyl transferase; SA – serum albumin; PT – prothrombin time; DRUG – drug or narcotics (xenobiotics) exposure; ALCO – long-term alcohol intake; DM – diabetes mellitus; OB – obesity; HL – hyperlipidemia;

Calculator for the diagnoses of toxic and drug-induced hepatitis, chronic hepatitis, alcoholic hepatitis, nonalcoholic steatohepatitis and autoimmune hepatitis are presented as a combination of individual input parameters.

Table 2. Results of calculator validation

Diagnostic value	Actual diagnosis (gold standard)				
	CH	TDIH	NASH	AH	AIH
PPV	0.59	0.75	1.00	0.35	0.42
NPV	0.93	0.99	0.99	0.99	1.00
Prevalence	0.28	0.23	0.10	0.07	0.08
Positive LR (conventional/weighted for prevalence)	3.70/1.46	9.90/2.96	Infinity	7.14/0.54	8.33/0.72
Negative LR (conventional/weighted for prevalence)	0.19/0.07	0.03/0.01	0.07/0.01	0.11/0.01	0.00/0.00
Pre-test odds	0.39	0.29	0.12	0.07	0.09
Post-test odds	1.43	2.87	Infinity	0.50	0.75

CH – chronic hepatitis; TDIH- toxic and drug-induced hepatitis; NASH – nonalcoholic steatohepatitis; AH – alcoholic hepatitis; AIH – autoimmune hepatitis; PPV – positive predictive value; NPV – negative predictive value; LR – likelihood ratio

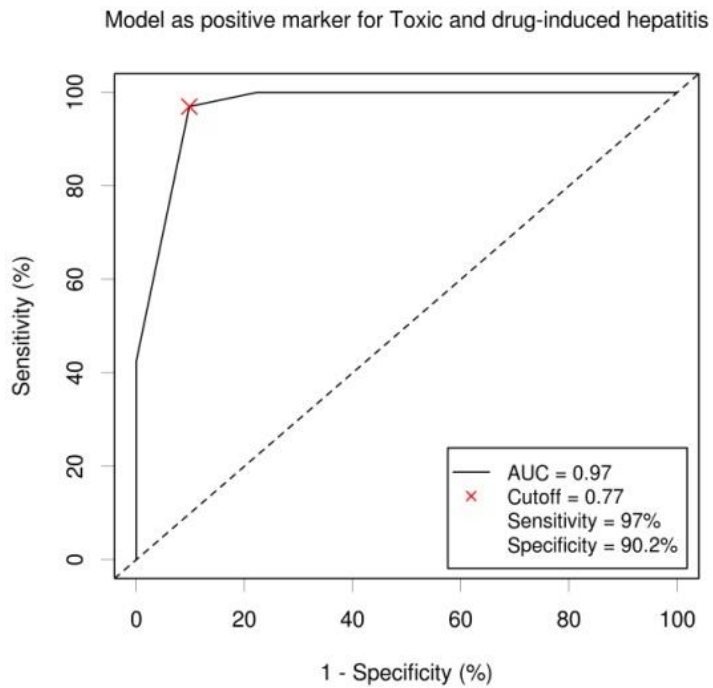


Figure 1. Receiver-operator curve for toxic and drug-induced hepatitis
AUC – area under the curve; Cutoff – cut-off value

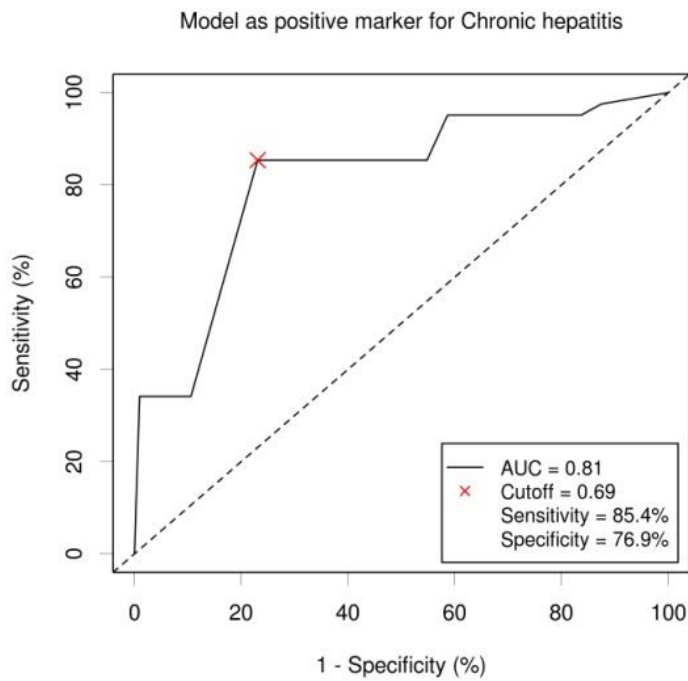


Figure 2. Receiver-operator curve for chronic hepatitis
AUC – area under the curve; Cutoff – cut-off value

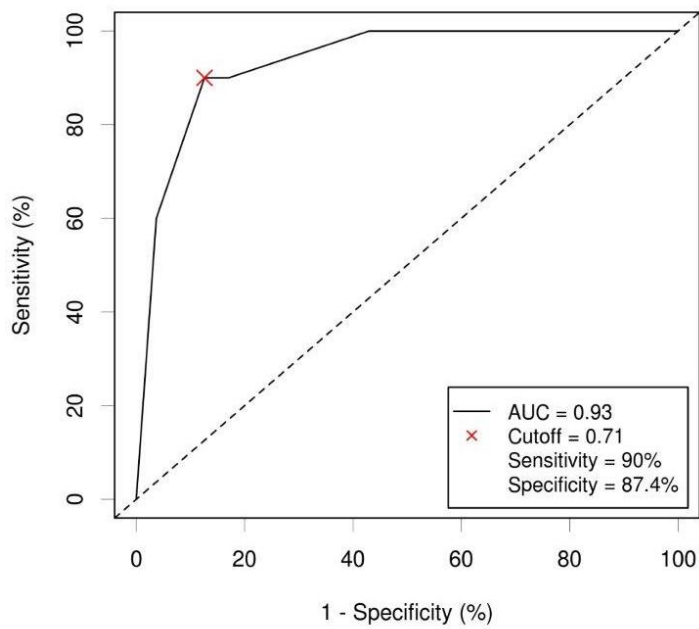


Figure 3. Receiver-operator curve for alcoholic hepatitis
AUC – areas under the curve; Cutoff – cut-off value