



Paper Accepted*

ISSN Online 2406-0895

Review Article / Преглед литературе

Marian Adamkov[†]

**Logical complexity of Bcl-2 family proteins function
in the intrinsic apoptosis**

Логичка комплексност функције породице протеина *Bcl-2*
у унутрашњој апоптози

Comenius University in Bratislava, Jessenius Faculty of Medicine in Martin, Department of Histology and Embryology, Martin, Slovakia

Received: January 24, 2019

Accepted: January 29, 2019

Online First: February 18, 2019

DOI: <https://doi.org/10.2298/SARH190124010A>

* **Accepted papers** are articles in press that have gone through due peer review process and have been accepted for publication by the Editorial Board of the *Serbian Archives of Medicine*. They have not yet been copy edited and/or formatted in the publication house style, and the text may be changed before the final publication.

Although accepted papers do not yet have all the accompanying bibliographic details available, they can already be cited using the year of online publication and the DOI, as follows: the author's last name and initial of the first name, article title, journal title, online first publication month and year, and the DOI; e.g.: Petrović P, Jovanović J. The title of the article. *Srp Arh Celok Lek*. Online First, February 2017.

When the final article is assigned to volumes/issues of the journal, the Article in Press version will be removed and the final version will appear in the associated published volumes/issues of the journal. The date the article was made available online first will be carried over.

[†] **Correspondence to:**

Marian ADAMKOV

Department of Histology and Embryology, Jessenius Faculty of Medicine in Martin, Malá Hora 4

036 01 Martin, Slovakia

Email: adamkov@jfmed.uniba.sk

Logical complexity of Bcl-2 family proteins function in the intrinsic apoptosis

Логичка комплексност функције породице протеина *Bcl-2* у унутрашњој апоптози

SUMMARY

Apoptosis (type of programmed cell death) is an active process of cellular self-destruction in multicellular organisms. It is characterized by distinctive histomorphological, biochemical, and molecular features. Multiple cellular pathways trigger apoptosis, two of them are the best known: intrinsic and extrinsic. Multiple cellular signals and interactions can influence the course of apoptotic pathways. Bcl-2 family proteins play a key role in regulatory mechanisms of intrinsic apoptosis. Mitochondrial outer membrane permeabilization (MOMP) is an essential step for intrinsic apoptosis that is controlled by pro-apoptotic and anti-apoptotic members of Bcl-2 protein family. Pro-apoptotic effector proteins Bax and Bak represent the only Bcl-2 proteins inducing formation of MOMP. MOMP pores facilitate the subsequent releasing of several pro-apoptotic proteins from mitochondrial intermembrane space into cytosol. These proteins initiate caspase cascade resulting in rapid elimination of the doomed cells.

Keywords: intrinsic apoptosis; Bcl-2; Bax; Bak

САЖЕТАК

Апоптоза (врста програмиране ћелијске смрти) активан је процес ћелијског самоуништења вишећелијских организама. Карактерише се различитим хистоморфолошким, биохемијским и молекуларним одликама. Различити ћелијски механизми доводе до настанка апоптозе, од којих су два најпознатија: унутрашњи и спољашњи. Вишеструки ћелијски сигнали и интеракције могу утицати на ток апоптозе. Породица протеина *Bcl-2* игра кључну улогу у регулаторним механизмима унутрашњих чинилаца апоптозе. Пермеабилizација спољашње мембране митохондрија (ПСММ) кључни је корак за почетак унутрашње апоптозе, који је контролисан проапоптотичким и антиапоптотичким протеинима породице протеина *Bcl-2*. Проапоптотички ефекторни протеини *Bax* и *Bak* једини су *Bcl-2* протеини који индукују настанак ПСММ. ПСММ поре олакшавају следствено ослобађање неколико проапоптотичких протеина из митохондријалног међумембранског простора у цитосол. Ови протеини иницирају каскаду каспазе, доводећи до брзе елиминације апоптозом захваћене ћелије.

Кључне речи: унутрашња апоптоза; *Bcl-2*; *Bax*; *Bak*

INTRODUCTION

Apoptosis (form of programmed cell death, type I cell death) is an evolutionary conserved death machinery activated by a large range of diverse stimuli, both physiological and pathological. This is genetically controlled death pathway which occurs in normal development and aging, and maintains proper cell homeostasis. Apoptosis is considered as a potent defense program serving to remove supernumerary, undesirable, useless, and damaged cells by disease. It also plays an essential role in the immune reactions [1, 2]. Apoptosis is an active and physiological, energy-dependent form of cell death. In order to maintain normal function and cooperation of all tissues, organs, and systems, millions of cells die and proliferate every day. Imbalance between cell death and proliferation is implicated in many diseases. Thus, dysfunction or dysregulation of apoptotic program may cause wide spectrum of pathological conditions, such as neurodegenerative disorders, autoimmune diseases, ischemic diseases and a variety of cancers [3–7].

Morphologically at light microscope level, apoptosis affects individually dispersed cells but the broad tissue architecture remains undisturbed. Apoptotic cells are easily identifiable in low magnification because they are located within an unstained “halo” around them. Large apoptotic cells fragment into small apoptotic bodies with an intact membrane. Smaller cells, such as apoptotic granular layer cells of cerebellar cortex, do not usually fragment. Apoptotic bodies are rapidly and discretely taken up by macrophages or neighbouring cells with phagocytic activity. In contrast to necrosis, there is no inflammatory response of surrounding tissue [8, 9].

At electron microscope level, apoptotic cells are characterized by shrinkage and condensation of the cytoplasm as a result of water content reduction. Cytoplasmic organelles are packed together, although initially they are morphologically preserved and functionally active. Nuclear chromatin presents organized condensation, margination and fragmentation. Cell junctions and other surface specializations are lost but the plasma membrane remains displaying blebbing [1].

The multiple cellular pathways trigger apoptotic process. Two of them are the best characterized: an intrinsic or a mitochondrial pathway and an extrinsic or a death receptor pathway [10]. These two main pathways are related via specific molecules in one pathway that can influence a course of the other [11]. In addition, a perforin / granzyme pathway (granzyme B and granzyme A) can induce apoptosis. It is known that extrinsic, intrinsic, and granzyme B pathway may terminally converge on execution phase of apoptotic cascade. The granzyme A death course is a caspase-independent [1].

Nevertheless, the Nomenclature Committee on Cell Death (NCCD) proposed an updated classification of cell death subroutines focused mainly on molecular principles of demise machinery. In the most recent paper, NCCD recognizes intrinsic apoptosis, extrinsic apoptosis, mitochondrial permeability transition (MPT)-driven necrosis, necroptosis, ferroptosis, pyroptosis, parthanatos, entotic cell death, NETotic cell death, lysosome-dependent cell death, autophagy-dependent cell death, immunogenic cell death, cellular senescence, and mitotic catastrophe [8].

INTRINSIC APOPTOSIS

Bcl-2 family proteins

Mitochondria are the intracellular organelles which represent a nodal point for many death signals (Figure 1). They may converge to trigger both mitochondrial membranes permeabilization and mitochondrial proteins release.

One of the most famous groups of signals controlling complicated death machinery, is Bcl-2 family protein. For the first time, Bcl-2 gene was discovered in B-cell follicular malignant lymphoma [12, 13]. There is t(14; 18) translocation where Bcl-2 gene is translocated from its normal location on the long arm of chromosome 18 to a region adjacent to promoter in the immunoglobulin heavy-chain locus on the long arm of chromosome 14. Following gene activation and over-production of the encoded proteins lead to inhibition of cell death and promote lymphomagenesis [14, 15].

Bcl-2 proteins have either pro-apoptotic or anti-apoptotic function and they are key regulators of intrinsic apoptotic pathway.

The group of Bcl-2 proteins consists of at least 25 members up to date [3]. They are classified into three subgroups, based on their function in apoptotic process and the number of Bcl-2 homology domains (BH1, BH2, BH3, and BH4) [16]. Interestingly, they share more common features. All of them are composed of alpha helices. These alpha helical structures possess 1-2 central hydrophobic helix (helices) which are surrounded by 6-8 amphipathic helices. The structural similarity of Bcl-2 alpha helices to membrane – translocation domain of diphtheria toxin and the bacterial colicins suggests that Bcl-2 family proteins are capable of pore forming activity in lipid membranes [17]. A flexible loop is present in all three main subgroups, it is known to be regulatory structure. The Bcl-2 homology domains (BH1, BH2, BH3, and BH4) are localized either in one alpha helix or through two helices. They function in interactions between proteins. There are also alpha helices which are involved in membrane connections (membrane-binding region). However, structural variations of Bcl-2 family proteins are known both in the number and the arrangements of helices, in the number of BH domains and in the structure of a loop [18, 19].

The first subgroup, the anti-apoptotic or pro-survival Bcl-2 proteins possess four BH domains (BH1 – BH4) (Figure 2). They act as suppressors of cell death by direct binding and inactivating the pro-apoptotic Bcl-2 proteins. Bcl-2 itself (Figure 3), Bcl-XL, Mcl1, Bcl-W, and A1 proteins are members of anti-apoptotic subgroup [18, 20, 21].

The second multidomain subgroup, the pro-apoptotic effector proteins Bax (Figure 5), Bak, and Bok, contains three BH domains (BH1 – BH3) (Figure 4) and directly permeabilize the outer mitochondrial membrane to release apoptogenic factors [18, 22, 23].

The third subgroup, pro-apoptotic members of Bcl-2 protein family, contains a single BH3 domain (Fig. 6) and is very heterogeneous [18]. The BH3 – only pro-apoptotic proteins can be further divided as “activators” if they directly interact with mitochondrial Bax and / or Bak to cause conformational changes with subsequent activation, that is necessary for mitochondrial outer membrane permeabilization (MOMP) (Bid – Fig. 7, Bim, Puma, Noxa) [17, 24, 25]. In contrast,

“sensitizers” or “inactivators” bind and inhibit anti-apoptotic Bcl-2 proteins (Bad, Bmf, Hrk, Bik) [22, 26, 27].

In order to regulate apoptotic machinery, Bcl-2 proteins interact with each other and generate a complicated interaction network. This plays an executive role in decision whether a cell will live or die [3, 28].

The essential step for intrinsic apoptotic pathway is MOMP. This directly causes an irreversible release of different mitochondrial intermembrane space proteins into cytosol with subsequent activation of caspase cascade [22, 29]. MOMP is controlled by outstanding features of pro-apoptotic and anti-apoptotic members of the Bcl-2 family. These proteins are localized in the mitochondria either constitutively or by induction. Mutual interactions between Bcl-2 proteins act as a central regulators of MOMP [30].

Physiologically, outer mitochondrial membrane (OMM) is permeable to proteins up to 5 kDa. In contrast, MOMP pores facilitate passage of proteins larger than 100 kDa to cytosol [31, 32]. Pro-apoptotic effector proteins Bax and Bak represent the only Bcl-2 proteins which are able to form pores across OMM [20, 21]. The third effector protein Bok can act as a trigger for induction of MOMP in response to endoplasmic reticulum stress insults. Bok activation does not depend on interaction with other Bcl-2 proteins [33, 34].

In healthy conditions, Bak is constitutively membrane bound, it resides on OMM and shows only a small cytosolic fraction caused by retrotranslocation. Bax continuously cycles between the cytosol and OMM [3, 32, 35].

ACTIVATION OF BAX AND BAK BCL-2 PROTEINS

The BH3 – only pro-apoptotic proteins can be activated by various cytotoxic stresses with subsequent direct interaction with Bax / Bak. The BH3 domain of activator BH3 – only proteins Bid and Bim bind to the BH3 domain – binding groove in Bax and Bak [36, 37]. Worthy of note, Bid and Bax interact in this way just in case if both of them are on mitochondrial membranes. In activated effectors Bax and Bak, “latch” region of proteins represented by $\alpha 6 - \alpha 8$ moves away from the core region formed by $\alpha 1 - \alpha 5$. This transiently exposes the BH3 domain localized in $\alpha 2$ and is an essential step for Bax dimerization [37, 38, 39]. As a consequence, the bent core region becomes straightened and then interacts with the MOM by exposure of C-terminal hydrophobic domain in $\alpha 2 - \alpha 5$. Generally, hydrophobic segment of Bcl-2 is required for anchoring the protein in question to various intracellular organelles, including mitochondria, endoplasmic reticulum, and nuclear outer

membranes. In the meantime, the exposed $\alpha 2$ /BH3 domain of the effector protein binds to the groove of an adjoining effector protein and this mutual BH3 – groove interaction forms dimer. Formation of dimer displaces the BH3 domain of direct activator BH3 – only proteins, accounting for the “kiss-and-run” model [22, 23, 40, 41]. According to the “kiss-and-run” model, the BH3 – only direct activators bind transiently to Bax, they do not remain coupled with the pro-apoptotic effectors. Thus, activated Bax and Bak form homodimers and further dimer-by-dimer oligomerization [42, 43, 44]. Bax / Bak oligomers permeabilize OMM and induce formation of membrane pores (MOMP).

For Bax, another binding site has been reported. When the Bax is soluble in the cytosol, its BH – groove is associated with the carboxy-terminal $\alpha 9$ helix of the protein. The Bim BH3 domain does not bind to the canonical hydrophobic groove but it binds to the “rear” activation site on the opposite side of the hydrophobic groove (helices $\alpha 1 - \alpha 6$) [27]. It is followed by the Bax conformational changes and subsequent exposure of the carboxy-terminal $\alpha 9$ helix. This $\alpha 9$ helix is exposed for other interactions and additionally merges with MOM. At that point, BH groove becomes accessible to BH3 – domain of direct activator proteins, Bax oligomerizes and induces MOMP [22, 27, 39]. MOMP takes few seconds only per mitochondrion. But the onset of this process for each mitochondrion in a cell can vary, around 5 minutes are needed for all mitochondria in one cell to be permeabilized [23]. Of note, a partial MOMP can occur which does not cause cell death following sublethal stresses. In the incomplete MOMP, most but not all mitochondria within a cell show MOMP. In minority MOMP, only a few mitochondria experience MOMP [23].

The BH3 domain of sensitizer BH3 – only proteins interacts with BH3 domain-binding groove of anti-apoptotic Bcl-2 proteins, inhibiting their function.

As a matter of fact, this BH3-in-groove interaction represents an essential mechanistic facet of Bcl-2–controlled intrinsic apoptosis.

MOMP is inhibited by anti-apoptotic Bcl-2 family members. This group of pro-survival proteins possesses all BH domains and they are embedded into OMM or endoplasmic reticulum (ER) membrane. Pro-survival Bcl-2 proteins prevent oligomerization of Bax and Bak and pore-forming function by two mechanisms. Directly, by their physical sequestration at the OMM or indirectly, by the sequestration of BH3–only activator pro-apoptotic proteins [20, 25, 45].

It is believed that MOMP is also influenced by shape and size of mitochondria [46, 47]. Mitochondrial lipid composition can participate in activation of Bcl-2 proteins. Cardiolipin, localized on the mitochondrial inner membrane, may facilitate tBid – mediated activation of Bax and later large pore formation in liposomes [48]. Ceramides are also involved in apoptotic process. They are synthesized at the ER through the sphingomyelin pathway and accumulated in MOM during

apoptosis. Ceramides in MOM play a role in Bax activation and, in turn, Bax can activate synthesis of ceramides [49, 50]. Furthermore, two metabolites within the sphingolipid pathway, sphingosine-1-phosphate and aldehyde 2-trans-hexadecanal, directly promote Bak and Bax activation, respectively [51].

BOK BCL-2 PROTEIN

Unlike Bak and Bax, Bok is localized at the ER membrane and contributes to its homeostasis [52]. Bok appears to be constitutively active and may be antagonized by the endoplasmic reticulum – associated degradation (ERAD) pathway. It is not inhibited by anti-apoptotic Bcl-2 proteins [33]. If ERAD system becomes affected, Bok might accumulate and move to mitochondria, where it induces MOMP. Bok functions independently of Bak and Bax or other Bcl-2 proteins [39, 53].

CONCLUSION

In conclusion, intrinsic apoptosis is controlled by Bcl-2 intra-family interactions involving pro-apoptotic and anti-apoptotic molecules. Pro-apoptotic effector proteins Bax and Bak oligomerize in MOM to form MOMP with subsequent releasing of several pro-apoptotic proteins from mitochondrial intermembrane space into cytosol [27]. Once released to cytosol, they can initiate or promote apoptotic pathways. Basically, these proteins can be divided into two groups. The first group is composed of cytochrome c, Smac / DIABLO, and HtrA2 / OMI. They induce activity of caspase system leading to cell self-destruction. The second group proteins, AIF and endonuclease G, can translocate into nucleus and cause DNA disintegration by caspase-independent mode [26].

NOTE

This work was supported by VEGA grant 1/0129/16.

ACKNOWLEDGMENTS

We thank Mrs. Jana Visnovcova and Mrs. Slavka Drahosova for the skillful technical assistance.

REFERENCES

1. Elmore S. Apoptosis: A review of programmed cell death. *Toxicologic Pathology*. 2007; 35:495-516.
2. Berthelet J, Dubrez L. Regulation of apoptosis by inhibitors of apoptosis (IAPs). *Cells*. 2013; 2:163-87.
3. Siddiqui WA, Ahad A, Ahsan H. The mystery of BCL2 family: Bcl-2 proteins and apoptosis: an update. *Arch Toxicol*. 2015; 89:289-317.
4. Favoloro B, Allocati N, Graziano V, Di Ilio C, De Laurenzi V. Role of apoptosis in disease. *AGING*. 2012; 4(5):330-49.
5. Adamkov M, Lauko L, Rajčáni J, Bálentová S, Rybárová S, Mištuna D, et al. Expression of antiapoptotic protein survivin in malignant melanoma. *Biologia*. 2009; 64(4):840-4, Section Cellular and Molecular Biology.
6. Adamkov M, Furdjlová M, Horáček J, Benčat M, Kružliak P. Relationship of mismatch repair proteins and survivin in colon polyps and carcinomas. *Acta Histochemica*. 2014; 116:1007-14.
7. Adamkov M, Výbohá D, Tupá V, Chylíková J, Horáček J, Benčat M. Expression and significance of survivin in colorectal high grade and low grade adenomas. *Acta Histochemica*. 2015; 117:590-4.
8. Galluzzi L, Vitale I, Aaronson SA, Abrams JM, Adam D, Agostinis P, et al. Molecular mechanisms of cell death: recommendations of the Nomenclature Committee on Cell Death 2018. *Cell Death & Differentiation*. 2018; 25:486-541.
9. Adamkov M, editor. *Introduction to Functional Histology*. 4th ed. Turany: P+M Turany; 2017.
10. Adamkov M, Lauko L, Balentova S, Pec J, Pec M, Rajcani J. Expression pattern of anti-apoptotic protein survivin in dysplastic nevi. *Neoplasma*. 2009; 56(2):130-5.
11. Igney FH, Krammer PH. Death and anti-death: tumour resistance to apoptosis. *Nat Rev Cancer*. 2002; 2:277-88.
12. Tsujimoto Y, Finger LR, Yunis J, Nowell PC, Croce CM. Cloning of the chromosome breakpoint of neoplastic B cells with the t(14; 18) chromosome translocation. *Science*. 1984; 226:1097-9.
13. Bakhshi A, Jensen JP, Goldman P, Wright JJ, McBride OW, Epstein AL, et al. Cloning the chromosomal breakpoint of t(14; 18) human lymphomas: clustering around JH on chromosome 14 and near a transcriptional unit on 18. *Cell*. 1985; 41:899-906.
14. McDonnell TJ, Korsmeyer SJ. Progression from lymphoid hyperplasia to high-grade malignant lymphoma in mice transgenic for the t(14; 18). *Nature*. 1991; 349:254-256.
15. Campbell KJ, Tait SWG. Targeting BCL-2 regulated apoptosis in cancer. *Open Biol*. 2018; 8:180002.
16. Garcia-Saez AJ. The secrets of the Bcl-2 family. *Cell Death Differ*. 2012; 19:1733-40.
17. Dai H, Wei Meng X, Kaufmann SH. BCL2 Family, Mitochondrial Apoptosis, and Beyond. *Cancer Transl Med*. 2016; 2(1):7-20.
18. Yin XM, Dong Z, editors. *Essential of Apoptosis A Guide for Basic and Clinical Research*. Totowa: Humana Press Inc; 2003.
19. Shamas-Din A, Kale J, Leber B, Andrews DW. Mechanisms of Action of Bcl-2 Family Proteins. *Cold Spring Harb Perspect Biol*. 2013; 5:a008714.
20. Czabotar PE, Lessene G, Strasser A, Adams JM. Control of apoptosis by the BCL-2 protein family: implications for physiology and therapy. *Nat Rev Mol Cell Biol*. 2014; 15(1):49-63.
21. Moldoveanu T, Follis AV, Kriwacki RW, Green DR. Many players in BCL-2 family affairs. *Trends Biochem Sci*. 2014; 39(3):101-11.
22. Kale J, Osterlund EJ, Andrews DW. BCL-2 family proteins: changing partners in the dance towards death. *Cell Death and Differentiation*. 2018; 25:65-80.
23. Kalkavan H, Green DR. MOMP, cell suicide as a BCL-2 family business. *Cell Death and Differentiation*. 2018; 25:46-55.
24. Dai H, Smith A, Meng XW, Schneider PA, Pang Y-P, Kaufmann SH. Transient binding of an activator BH3 domain to the Bak BH3-binding groove initiates Bak oligomerization. *J Cell Biol*. 2011; 194(1): 39-48.

25. Chen HC, Kanai M, Inoue-Yamauchi A, Tu HC, Huang Y, Ren D, et al. An interconnected hierarchical model of cell death regulation by the BCL-2 family. *Nat Cell Biol.* 2015; 17(10):1270-81.
26. Lopez J, Tait SWG. Mitochondrial apoptosis: killing cancer using the enemy within. *British Journal of Cancer.* 2015; 112:957-62.
27. Peña-Blanco A, García-Sáez AJ. Bax, Bak and beyond – mitochondrial performance in apoptosis. *The FEBS Journal.* 2018; 285:416-31.
28. Tsujimoto Y, Shimizu S. Bcl-2 family: Life-or-death switch. *FEBS Letters.* 2000; 466:6-10.
29. Chipuk JE, Green DR. How do BCL-2 proteins induce mitochondrial outer membrane permeabilization? *Trends Cell Biol.* 2008; 18(4):157-64.
30. Puthalakath H, Strasser A. Keeping killers on a tight leash: transcriptional and post-translational control of the pro-apoptotic activity of BH3-only proteins. *Cell Death Differ.* 2002; 9(5):505-12.
31. Walther DM, Rapaport D. Biogenesis of mitochondrial outer membrane proteins. *Biochim Biophys Acta.* 2009; 1793:42-51.
32. Tait SW, Green DR. Mitochondria and cell death: outer membrane permeabilization and beyond. *Nat Rev Mol Cell Biol.* 2010; 11:621-32.
33. Llambi F, Wang YM, Victor B, Yang M, Schneider DM, Gingras S, et al. BOK is a non-canonical BCL-2 family effector of apoptosis regulated by ER-associated degradation. *Cell.* 2016; 165:421-33.
34. Fernandez-Marrero Y, Ke F, Echeverry N, Bouillet P, Bachmann D, Strasser A, et al. Is BOK required for apoptosis induced by endoplasmic reticulum stress? *Proc Natl Acad Sci USA.* 2016; 113:E492-E493.
35. Todt F, Cakir Z, Reichenbach F, Emschermann F, Lauterwasser J, Kaiser A, et al. Differential retrotranslocation of mitochondrial Bax and Bak. *EMBO J.* 2015; 34:67-80.
36. Moldoveanu T, Grace CR, Llambi F, Nourse A, Fitzgerald P, Gehring K, et al. BID-induced structural changes in BAK promote apoptosis. *Nat Struct Mol Biol.* 2013; 20:589-97.
37. Czabotar PE, Westphal D, Dewson G, Ma S, Hockings C, Fairlie WD, et al. Bax crystal structures reveal how BH3 domains activate Bax and nucleate its oligomerization to induce apoptosis. *Cell.* 2013; 152:519-31.
38. Kim H, Tu HC, Ren D, Takeuchi O, Jeffers JR, Zambetti GP, et al. Stepwise activation of BAX and BAK by tBID, BIM, and PUMA initiates mitochondrial apoptosis. *Mol Cell.* 2009; 36:487-99.
39. Green DR. *Cell Death. Apoptosis and Other Means to an End.* 2nd ed. New York: Cold Spring Harbor; 2018.
40. Wei MC, Lindsten T, Mootha VK, Weiler S, Gross A, Ashiya M, et al. tBID, a membrane-targeted death ligand, oligomerizes BAK to release cytochrome c. *Genes Dev.* 2000; 14: 2060-71.
41. Eskes R, Desagher S, Antonsson B, Martinou JC. Bid induces the oligomerization and insertion of Bax into the outer mitochondrial membrane. *Mol Cell Biol.* 2000; 20:929-35.
42. Ma S, Hockings C, Anwari K, Kratina T, Fennell S, Lazarou M, et al. Assembly of the Bak apoptotic pore: a critical role for the Bak protein alpha6 helix in the multimerization of homodimers during apoptosis. *J Biol Chem.* 2013; 288:26027-38.
43. Subburaj Y, Cosentino K, Axmann M, Pedrueza-Villamanzo E, Hermann E, Bleicken S, et al. Bax monomers form dimer units in the membrane that further self-assemble into multiple oligomeric species. *Nat Commun.* 2015; 6:8042.
44. Zhang Z, Subramaniam S, Kale J, Liao C, Huang B, Brahmabhatt H, et al. BH3-in-groove dimerization initiates and helix 9 dimerization expands Bax pore assembly in membranes. *EMBO J.* 2016; 35:208-36.
45. Llambi F, Moldoveanu T, Tait SW, Bouchier-Hayes L, Temirov J, McCormick LL, et al. A unified model of mammalian BCL-2 protein family interactions at the mitochondria. *Mol Cell.* 2011; 44:517-31.
46. Weaver D, Eisner V, Liu X, Vámai P, Hunyady L, Gross A, et al. Distribution and apoptotic function of outer membrane proteins depend on mitochondrial fusion. *Mol Cell.* 2014; 54:870-8.

47. Renault TT, Floros KV, Elkholi R, Corrigan KA, Kushnareva Y, Wieder SY, et al. Mitochondrial shape governs BAX-induced membrane permeabilization and apoptosis. *Mol Cell*. 2015; 57:69-82.
48. Landeta O, Landajuela A, Gil D, Taneva S, Di Primo C, Sot B, et al. Reconstitution of proapoptotic BAK function in liposomes reveals a dual role for mitochondrial lipids in the BAK-driven membrane permeabilization process. *J Biol Chem*. 2011; 286:8213-30.
49. Beverly LJ, Howell LA, Hernandez-Corbacho M, Casson L, Chipuk JE, Siskind LJ. BAK activation is necessary and sufficient to drive ceramide synthase-dependent ceramide accumulation following inhibition of BCL2-like proteins. *Biochem J*. 2013; 452:111-9.
50. Jain A, Beutel O, Ebell K, Korneev S, Holthuis JC. Diverting CERT-mediated ceramide transport to mitochondria triggers Bax-dependent apoptosis. *J Cell Sci*. 2017; 130:360-71.
51. Chipuk JE, McStay GP, Bharti A, Kuwana T, Clarke CJ, Siskind LJ, et al. Sphingolipid metabolism cooperates with BAK and BAX to promote the mitochondrial pathway of apoptosis. *Cell*. 2012; 148: 988-1000.
52. Echeverry N, Bachmann D, Ke F, Strasser A, Simon HU, Kaufmann T. Intracellular localization of the BCL-2 family member BOK and functional implications. *Cell Death Differ*. 2013; 20:785-99.
53. Fernandez-Marrero Y, Bleicken S, Das KK, Bachmann D, Kaufmann T, Garcia-Saez AJ. The membrane activity of BOK involves formation of large, stable toroidal pores and is promoted by cBID. *FEBS J*. 2017; 284:711-24.

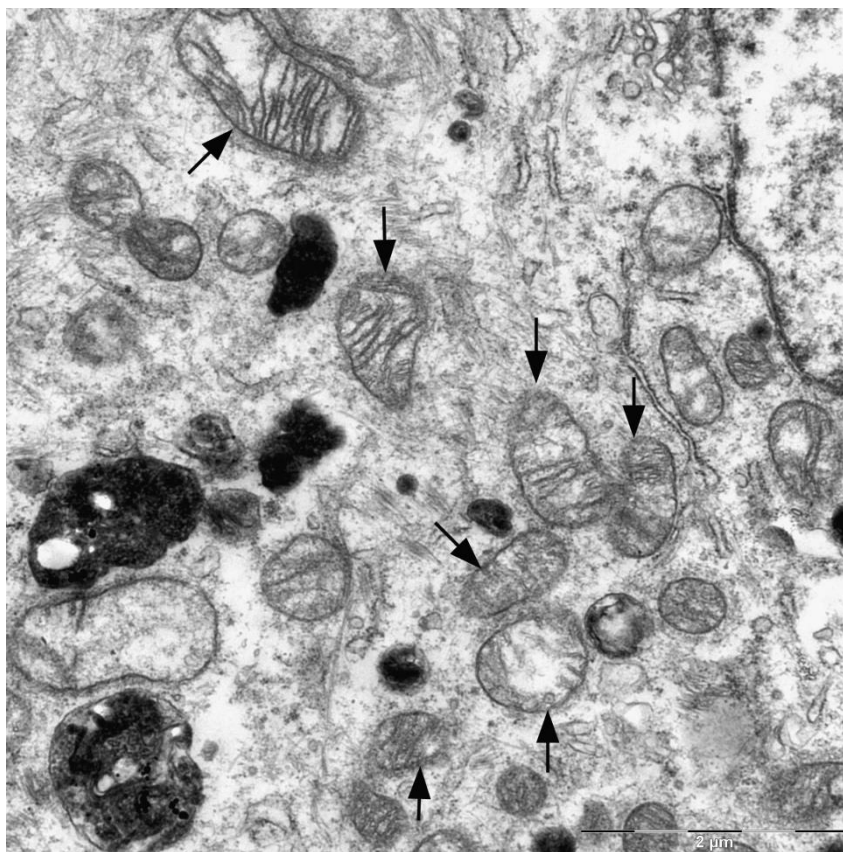


Figure 1. Transmission electron microscope image of a thin section through cell of MCF7 cell line showing numerous mitochondria (arrows); origin of cell line: human breast adenocarcinoma

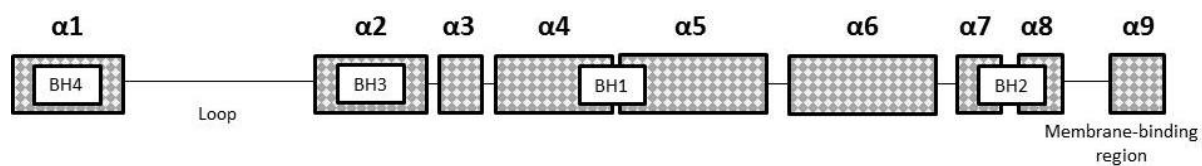


Figure 2. Basic schematic structure of anti-apoptotic Bcl-2 proteins subgroup

Paper accepted

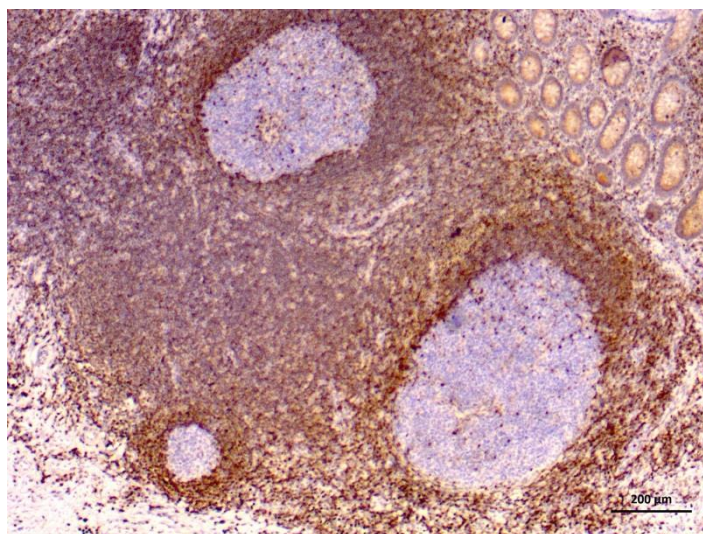


Figure 3. Immunohistochemical reaction with anti-Bcl-2 antibody in human appendix lymphoid tissue

Paper accepted

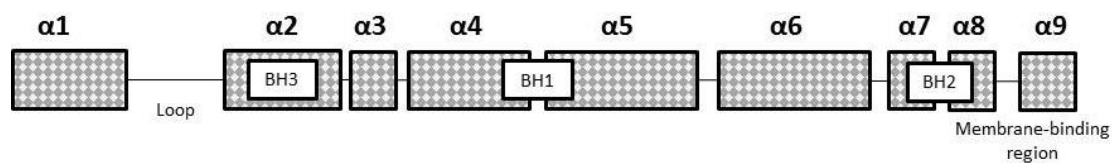


Figure 4. Basic schematic structure of pro-apoptotic effector Bcl-2 proteins subgroup

Paper accepted

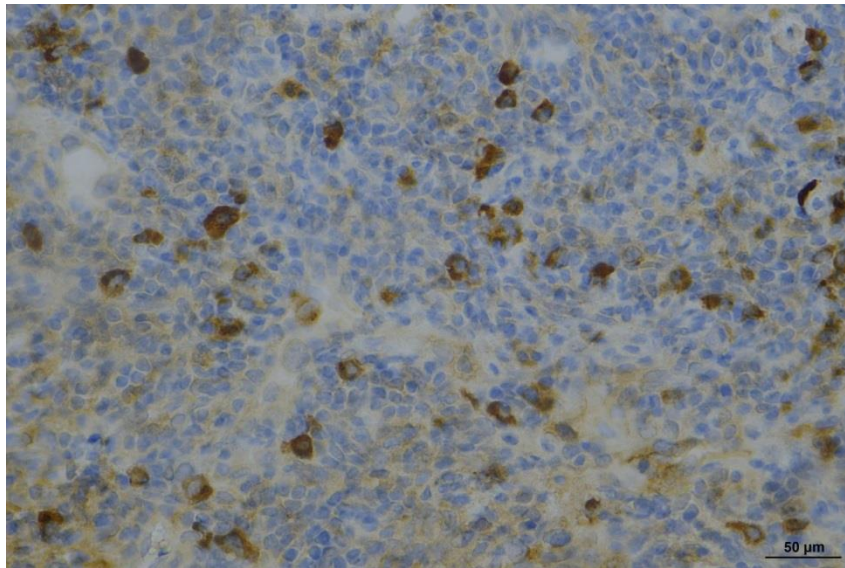


Figure 5. Immunohistochemical reaction with anti-Bax antibody in breast adenocarcinoma

Paper accepted

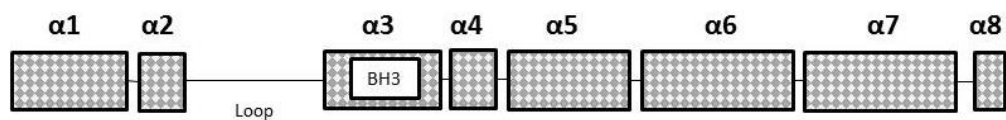


Figure 6. Basic schematic structure of BH3 – only pro-apoptotic Bcl-2 proteins subgroup

Paper accepted

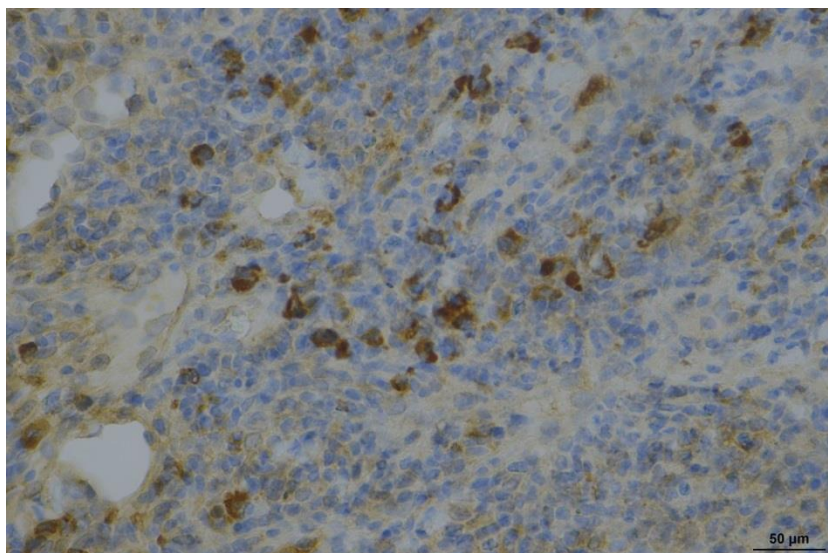


Figure 7. Immunohistochemical reaction with anti-Bid antibody in breast adenocarcinoma; both anti-Bax and anti-Bid antibodies were applied on the tissue sections from an identical paraffin block

Paper accepted