

ORIGINAL ARTICLE / ОРИГИНАЛНИ РАД

Morphometric characteristics of the great saphenous vein as graft for surgical myocardial revascularization in relation to sex

Saša S. Živić¹, Ivan Nikolić², Marko Jović², Vladimir Petrović², Dragan C. Bogdanović³,
Vladimir Stojiljković¹, Aleksandar Kamenov¹

¹University Clinical Centre of Niš, Clinic for Cardiac Surgery, Niš, Serbia;

²University of Niš, Faculty of Medicine, Department of Histology and Embryology, Niš, Serbia;

³Niš Institute of Public Health, Niš, Serbia



SUMMARY

Introduction/Objective The significant difference in the patency of venous coronary grafts in relation to sex still does not have a clearly defined cause. Our research determined the existence of morphometric differences in the wall of the great saphenous vein, in relation to sex.

Methods The research included 268 patients classified by sex in five age groups, who underwent morphometric measurement of the wall of the great saphenous vein.

Results In our research, no significant difference was found in the total thickness of the vein wall between the sexes ($p = 0.111$), nor was significant association found between wall thickness, age, and sex. The average thickness of the intimal layer of the vein wall was significantly higher in male subjects ($p = 0.005$), and multivariate regression analysis found a significant correlation between intimal thickness, age and sex ($p < 0.001$). The medial layer of the vein in women was significantly larger ($p < 0.001$), both overall and in all age groups. Multivariate regression analysis confirmed a significant association between media thickness, age and sex ($p < 0.001$). The thickness of the adventitial layer was significantly higher in men ($p = 0.031$) and a significant association between the thickness of the adventitia, age and sex was also determined ($p < 0.001$).

Conclusion Our results indicate significant morphometric differences in the wall of the great saphenous vein in relation to sex and age of the patients, which can be related to significant difference in the flow rate of vein grafts in coronary surgery in relation to sex.

Keywords: cardiac surgery; vein morphometry; patency

INTRODUCTION

The most common treatment for multiple coronary artery disease (CAD) is coronary artery bypass grafting (CABG), and the great saphenous vein (GSV) is the most commonly used conduit. Data indicate that in as many as 89.3% of cases GSV is used during CABG [1], although all analyses of CABG results show significant differences in the patency of arterial vs. venous grafts [2, 3]. Also, the available data indicate the existence of a significant difference in the early and late patency of vein grafts in relation to sex.

By analyzing the first 2054 patients who underwent CABG at the Cleveland Clinic (USA), it can be concluded that the female sex is the third most important operative risk factor in coronary surgery, and two years after CABG women have significantly lower patency of vein grafts than men [4].

In a Dutch multicenter study, after one year of follow-up from coronary revascularization, vein graft occlusion was 16.7% in women and 12.4% in men [5].

In the "Reduction in Graft Occlusion Rates (RIGOR) Study," analyzing 611 grafts, vein

graft occlusion was found much more often in women ($p = 0.03$) and as one of the main significant risk factors for occlusion, independent of others, they state female sex ($p = 0.01$) [6].

There are numerous authors who state that female sex is one of the risk factors for poor results after CABG as well as for vein graft occlusion [7, 8, 9], although those who deny it are not rare [10, 11].

The main cause of intermediate and late reduction of vein graft patency in coronary surgery is neointimal hyperplasia of the intimal layer. The main pathophysiological mechanism of intimal hyperplasia is the migration of smooth muscle cells (SMC) from the medial to the intimal layer of the vein, their proliferation, and accumulation of extracellular matrix [12, 13]. This process begins immediately after implanting of the vein into the arterial system, so that as soon as 4–6 weeks later most veins develop intimal thickening by migration and proliferation of SMC from the media and reduction of the venous lumen [14].

We analyzed the presence of differences in the histological morphometry of the GSV wall used for CABG in relation to sex and their association with the level of patency.

Received • Примљено:
September 23, 2024

Revised • Ревизија:
February 24, 2025

Accepted • Прихваћено:
March 6, 2025

Online first: March 7, 2025

Correspondence to:

Saša S. ŽIVIĆ
University Clinical Centre of Niš
Clinic for Cardiac Surgery
Bul. Dr Z. Đinđića 48
18000 Niš, Serbia
sasa.dr.zivic@gmail.com

METHODS

The study included 268 patients at the Clinic for Cardiac Surgery, Niš University Clinical Center, 134 women and 134 men, randomized by sex into five age groups: Group 1 (up to 39 years of age); Group 2 (40–49 years old); Group 3 (50–59 years old); Group 4 (60–70 years old) and Group 5 (70 years and over). There were 27 men and women in each age group, except in Group 1, where there were 26 men and 26 women.

The number of study participants was determined using the G*Power 3.1.6 program (Heinrich-Heine-Universität Düsseldorf, Düsseldorf, Germany).

Patients who were scheduled for at least one venous coronary bypass were included in the study. Exclusion criteria were patients who were treated with venous drug therapy or chemical vein ablation due to venous disease, and those with a history of thrombosis in the superficial and deep venous system.

Patients included in the study were divided into groups according to age and sex, and simple randomization was achieved using computer-generated random numbers.

A 1 cm-long GSV sample was taken through a longitudinal skin and subcutaneous incision using a conventional technique at the level of the medial malleolus, without prior dilatation and lavage, and the perivascular tissue and fascia were sharply dissected with scissors.

Immediately after collection, the GSV samples were fixed in a 4% buffered formalin solution (via immersion fixation) and embedded in paraffin. The paraffin blocks were sectioned at a thickness of 4 µm, then deparaffinized, rehydrated, and stained with hematoxylin and eosin (H&E), following standard protocols.

Analysis, measurements, and photography of venous preparations were performed by histologists on an Olympus BX50 microscope (Olympus, Tokyo, Japan) equipped with a Leica DFC295 digital camera (Leica Microsystems, Wetzlar, Germany). Morphometric analysis was performed using the “ImageJ” program (LOCI, University of Wisconsin, Madison, WI, USA).

Determination of the thickness of the individual layers of the vein wall and the total thickness of the vein wall was performed by measuring each preparation at three equal distances (0°, 120°, and 240°) due to marked differences in the thickness of the individual layers of the same vein. The mean value of three measurements for each preparation was used for statistical processing.

The results of the statistical analysis are presented in tabular and graphical form. Calculations were performed using PASW Statistics, Version 18.0 (SPSS Inc., Chicago, IL, USA). In all analyses, the default error of estimation was less than 0.05 (5%) as the limit of statistical significance. The Shapiro–Wilk test was used to test the normality of the distribution of numerical values. The comparison of the thickness of the tunica intima, media, adventitia, as well as the total thickness of the vein wall between men and women was performed by the Student’s t-test for two independent samples. The comparison of the mean values of the mentioned characteristics between the five age

Table 1. Thickness of tunica intima (µm) by sex and age

Age group	Parameter	Sex		Total	Comparison between men and women p-value
		Male	Female		
Group 1	X	153.85	96.04	124.95	< 0.001
	SD	58.67	38.75	57.23	
	Med	150.7	93.37	106.43	
	Min	30.92	24.87	24.87	
	Max	288.97	236.24	288.97	
Group 2	X	110.97	151.74	131.36	0.002
	SD	41.22	49.77	49.72	
	Med	102.13	159.41	124.25	
	Min	14.19	43.65	14.19	
	Max	193.88	248.87	248.87	
Group 3	X	148.95	152.63	150.79	0.818
	SD	59.51	57.07	57.78	
	Med	138.59	139.54	139.23	
	Min	59.32	73.90	59.32	
	Max	354.05	297.64	354.05	
Group 4	X	208.4	129.81	169.1	< 0.001
	SD	50.53	46.6	62.38	
	Med	200.36	113.31	177.82	
	Min	84.35	63.12	63.12	
	Max	314.95	214.54	314.95	
Group 5	X	164.7	153.45	159.08	0.500
	SD	48.32	71.27	60.58	
	Med	164.42	146.8	157.52	
	Min	76.69	12.62	12.62	
	Max	278.82	383.79	383.79	
Total	X	157.4	137.04	147.22	0.005
	SD	60.17	57.51	59.63	
	Med	154.61	126.94	139.23	
	Min	14.19	12.62	12.62	
	Max	354.05	383.79	383.79	
Comparison between age groups		A*, C†, F‡, G†, H†, J*	A†, B†, D†	C†, D*, F*	

X – arithmetic mean; SD – standard deviation; Med – median; Min – minimum; Max – maximum; A – Group 1 vs. Group 2; B – Group 1 vs. Group 3; C – Group 1 vs. Group 4; D – Group 1 vs. Group 5; E – Group 2 vs. Group 3; F – Group 2 vs. Group 4; G – Group 2 vs. Group 5; H – Group 3 vs. Group 4; I – Group 3 vs. Group 5; J – Group 4 vs. Group 5;

*p < 0.05

†p < 0.01;

‡p < 0.001

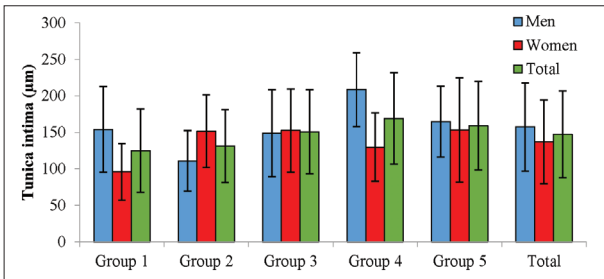


Figure 1. Comparison of intimal thickness (µm) by sex and age

groups was performed by one-way ANOVA, and subsequent Tukey post-hoc test. Multivariate linear regression analysis using the enter method was used to assess the association of age and sex with the thickness of the tunica

intima, media, adventitia, as well as the total thickness of the vein wall.

The study was carried out with the consent of the Ethics Committee of the Faculty of Medicine of the University of Niš, No. 12-10580-2/5 from October 9, 2018, and the Ethical Committee of the Niš Clinical Center, No. 35933/8 from November 6, 2018. Prior to engaging in the research, all participants signed informed consent according to the Declaration of Helsinki.

RESULTS

The average age of all subjects in the study was 54.42 ± 14.45 years. The average age of examined women was higher than that of men, but without statistical significance. Also, there was no statistically significant difference in the average age between sexes within the same age groups.

The total average thickness of the tunica intima was significantly greater in men (Table 1; Figure 1). The overall average thickness of the intima irrespective of sex was the highest in Group 4, and it is a significantly higher value compared to Group 1 and Group 2. The total average thickness of the intima in Group 5 is significantly higher compared to Group 1.

In the examined men, the average thickness of the intima was significantly higher in Group 4 compared to all other age groups.

In the examined women, the total average thickness of the intima was highest in Group 5 and lowest in Group 1. The thickness of the intimal layer in women in Group 1 was significantly lower compared to Group 2, 3, and 5.

Regression analysis confirmed a significant association between intimal thickness, age, and sex. Each year of age was associated with an increase in intimal thickness of $1.059 \mu\text{m}$ ($p < 0.001$).

In Figure 2, the trend of an increase in the thickness of the intimal layer with aging can be clearly seen, which is somewhat more pronounced in men than in women.

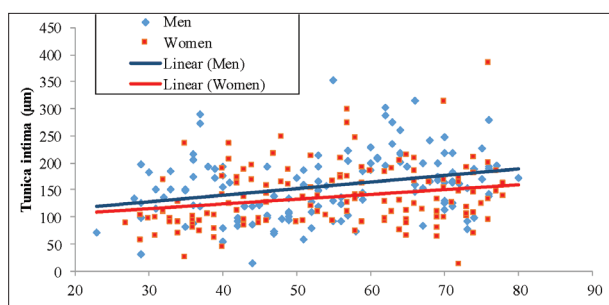


Figure 2. Correlation between the thickness of the intimal layer and age

The total average thickness of the tunica media of all study participants was $394.82 \pm 104.10 \mu\text{m}$ (Table 2; Figure 3). The total average thickness of the medial layer in women was significantly higher than in men ($p < 0.001$). Comparing the average thickness of the medial layer in relation to sex, it was significantly higher in women in all age groups compared to the same male age groups.

Table 2. Thickness of tunica media (μm) by sex and age

Age group	Parameter	Sex		Total	Comparison between men and women p-value
		Male	Female		
Group 1	X	319.7	430.36	375.03	< 0.001
	SD	52.74	104.85	99.37	
	Med	314.88	413.79	365.42	
	Min	191.45	164.71	164.71	
	Max	422.86	721.67	721.67	
Group 2	X	361.34	448.82	405.08	0.005
	SD	132.01	79.73	116.69	
	Med	376.4	435.52	409.67	
	Min	126.93	265.3	126.93	
	Max	781.07	593.51	781.07	
Group 3	X	328.02	398.32	363.17	0.003
	SD	91.91	75.92	90.72	
	Med	319.21	384.19	369.44	
	Min	178.64	221.48	178.64	
	Max	512.99	601.65	601.65	
Group 4	X	291.88	361.96	326.92	0.006
	SD	81.99	98.62	96.54	
	Med	275.51	361.22	317.61	
	Min	164.89	147.33	147.33	
	Max	503.79	546.61	546.61	
Group 5	X	255.5	304.17	279.84	0.006
	SD	48.64	74.52	66.99	
	Med	267.36	300.84	278.9	
	Min	164.04	150.32	150.32	
	Max	332.89	448.96	448.96	
Total	X	311.22	388.42	349.82	< 0.001
	SD	92.98	100.55	104.1	
	Med	300.61	388.25	344.64	
	Min	126.93	147.33	126.93	
	Max	781.07	721.67	781.07	
Comparison between age groups		F*, G†, I*	C*, D†, F†, G†, I†	D†, F†, G†, I†	

X – arithmetic mean; SD – standard deviation; Med – median; Min – minimum; Max – maximum; E – Group 2 vs. Group 3; F – Group 2 vs. Group 4; G – Group 2 vs. Group 5; H – Group 3 vs. Group 4; I – Group 3 vs. Group 5; J – Group 4 vs. Group 5; C – Group 1 vs. Group 4; D – Group 1 vs. Group 5;

* $p < 0.05$;

† $p < 0.01$;

* $p < 0.001$

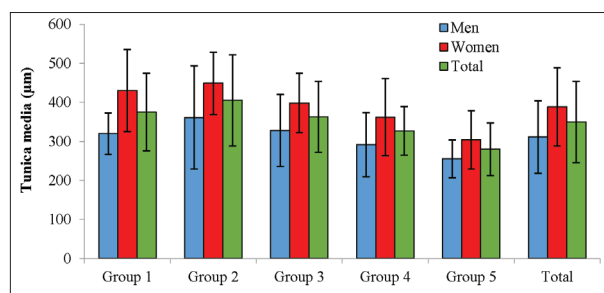


Figure 3. Comparison of tunica media thickness (μm) by sex and age

In men, the average thickness of the medial layer was the highest in Group 2, and significantly higher compared to Group 4 and 5.

In the examined women, the average thickness of the media was the highest in Group 2 and the lowest in Group

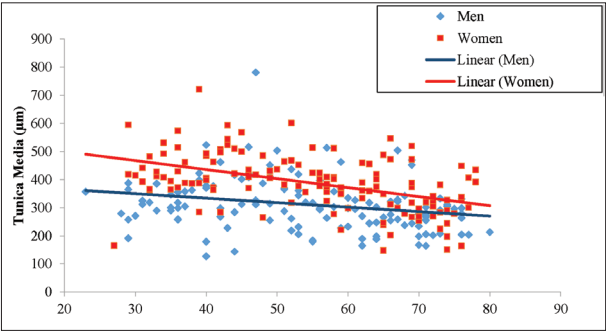


Figure 4. Correlation between the thickness of the medial layer and age

Table 3. Thickness of tunica adventitia (µm) by sex and age

Age group	Parameter	Sex		Total	Comparison between men and women p-value
		Male	Female		
Group 1	X	241.99	206.98	224.48	0.014
	SD	47.55	51.82	52.32	
	Med	264.66	201.82	236.05	
	Min	143.54	104.85	104.85	
	Max	303.25	316.08	316.08	
Group 2	X	330.75	309.5	320.13	0.553
	SD	159.14	94.42	130.05	
	Med	309.52	307.81	308.67	
	Min	167.89	157.14	157.14	
	Max	951.18	475.75	951.18	
Group 3	X	364.6	344.09	354.34	0.403
	SD	91.46	87.17	89.1	
	Med	367.96	354.86	367.42	
	Min	168.65	203.04	168.65	
	Max	511.92	560.21	560.21	
Group 4	X	360.35	276.60	318.48	0.001
	SD	62.28	104.65	95.19	
	Med	377.64	291.47	337.74	
	Min	216.45	48.19	48.19	
	Max	473.56	482.64	482.64	
Group 5	X	315.23	337.29	326.26	0.403
	SD	92.69	99.27	95.78	
	Med	301.82	347.22	328.22	
	Min	178.54	156.29	156.29	
	Max	516.01	473.42	516.01	
Total	X	323.19	295.55	309.37	0.031
	SD	106.73	101.38	104.81	
	Med	309.73	291.36	300.80	
	Min	143.54	48.19	48.19	
	Max	951.18	560.21	951.18	
Comparison between age groups		A*, B [‡] , C [‡]	A [‡] , B [‡] , C [‡] , D [‡]	A [‡] , B [‡] , C [‡] , D [‡]	

X – arithmetic mean; SD – standard deviation; Med – median; Min – minimum; Max – maximum; A – Group 1 vs. Group 2; B – Group 1 vs. Group 3; C – Group 1 vs. Group 4; D – Group 1 vs. Group 5;
*p < 0.05;
[‡]p < 0.01;
^{‡‡}p < 0.001

5. Media thickness in Group 5 was significantly lower than that in Groups 1, 2, and 3. Media thickness in Group 4 was significantly less than that in Groups 1 and 2.
Regression analysis confirmed a significant association between the thickness of the medial layer of the vein wall, age, and sex. Each year of age was associated with a

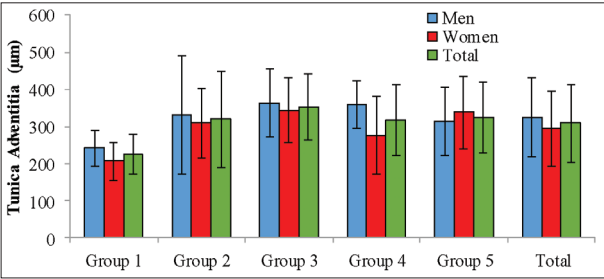


Figure 5. Comparison of tunica adventitia thickness (µm) by sex and age

decrease in media thickness of 2.411 µm ($p < 0.001$). In examined women, the thickness of the medial layer was 78.217 µm ($p < 0.001$) higher than in men.

Figure 4 clearly shows the existence of a trend of medial thickness decline with aging, and that this decline is more pronounced in women than in men.

The total average thickness of the tunica adventitia in all subjects was 309.37 ± 104.81 µm (Table 3; Figure 5). The average thickness of the adventitia was significantly higher in all examined men than in women ($p = 0.031$). Compared with age groups, the thickness of the adventitia in men compared to women was significantly higher in Group 1 and Group 4. The overall average thickness of the adventitia of all subjects in Group 1 was significantly lower than in all other age groups. In the examined men, the average thickness of the adventitia in Group 1 was significantly lower than in Groups 2, 3, and 4. In women, the thickness of the adventitia in Group 1 was significantly lower than in all other age groups. There were no significant differences between the other age groups of women.

Regression analysis confirmed a significant association between adventitia thickness, age, and sex. Each year of age was associated with an increase in adventitia thickness of 1.882 µm ($p < 0.001$). In examined women, the thickness of the adventitia was 28.441 µm ($p = 0.022$) lower than in men. In Figure 6, it can be seen that the trend of increasing the thickness of the adventitia with aging is somewhat more pronounced in women than in men.

The average total wall thickness in all subjects was

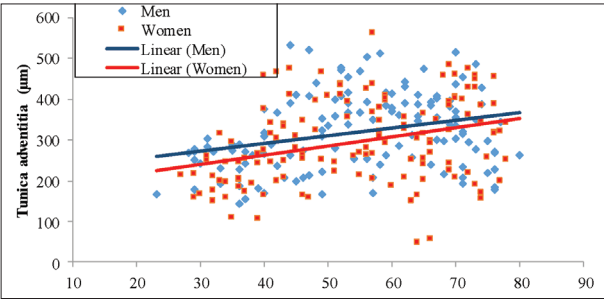


Figure 6. Correlation between the thickness of the tunica adventitia and age

805.28 ± 138.31 µm (Table 4, Figures 7 and 8). The average total thickness of the wall in all examined women was higher than in men, but not statistically significant ($p = 0.111$). The total thickness of the wall was significantly higher in men than in women in Group 4 ($p = 0.002$),

Table 4. Thickness of total vein wall (μm) by sex and age

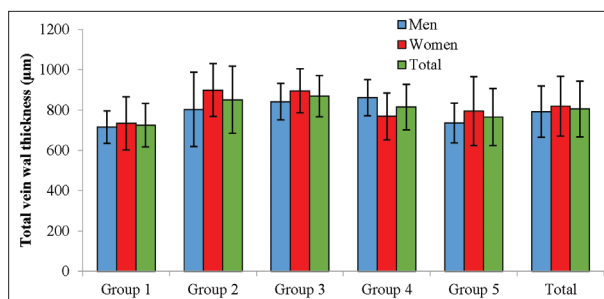
Age group	Parameter	Sex		Total	Comparison between men and women p-value
		Male	Female		
Group 1	Xsr	715.56	733.38	724.47	0.559
	SD	80.2	131.75	108.37	
	Med	708.52	717.49	714.52	
	Min	579.38	450.14	450.14	
	Max	890.08	1066.58	1066.58	
Group 2	X	803.02	898.95	850.99	0.033
	SD	185.19	131.53	166.3	
	Med	812.27	901.08	849.56	
	Min	419.98	512.95	419.98	
	Max	1346.72	1180.01	1346.72	
Group 3	X	841.57	895.03	868.3	0.054
	SD	89.87	108.49	102.3	
	Med	823.97	872.68	854.71	
	Min	675.63	716.25	675.63	
	Max	1023.05	1157.85	1157.85	
Group 4	X	860.63	768.37	814.5	0.002
	SD	89.53	115.82	112.61	
	Med	850.93	785.24	816.58	
	Min	724.99	497.65	497.65	
	Max	1059.6	950.56	1059.6	
Group 5	X	735.44	794.91	765.17	0.123
	SD	98.27	170.83	141.26	
	Med	734.68	807.99	763.24	
	Min	525.11	389	389	
	Max	910.32	1219.98	1219.98	
Total	X	791.81	818.76	805.28	0.111
	SD	127.35	147.7	138.31	
	Med	792.3	826.98	812.04	
	Min	419.98	389	389	
	Max	1346.72	1219.98	1346.72	
Comparison between age groups		B [†] , C [†] , I [†] , J [†]	A [†] , B [†] , F [†] , G [†] , H [†]	A [†] , B [†] , C [†] , G [†] , I [†]	

X – arithmetic mean; SD – standard deviation; Med – median; Min – minimum; Max – maximum; A – Group 1 vs. Group 2; B – Group 1 vs. Group 3; C – Group 1 vs. Group 4; F – Group 2 vs. Group 4; G – Group 2 vs. Group 5; H – Group 3 vs. Group 4; I – Group 3 vs. Group 5; J – Group 4 vs. Group 5;

*p < 0.05;

[†]p < 0.01;

[‡]p < 0.001

**Figure 7.** Comparison of total vein wall thickness (μm) by sex and age

while the total thickness of the wall was significantly higher in women than in men in Group 2 ($p = 0.033$). Differences between total wall thickness in men and women in other age groups are not statistically significant.

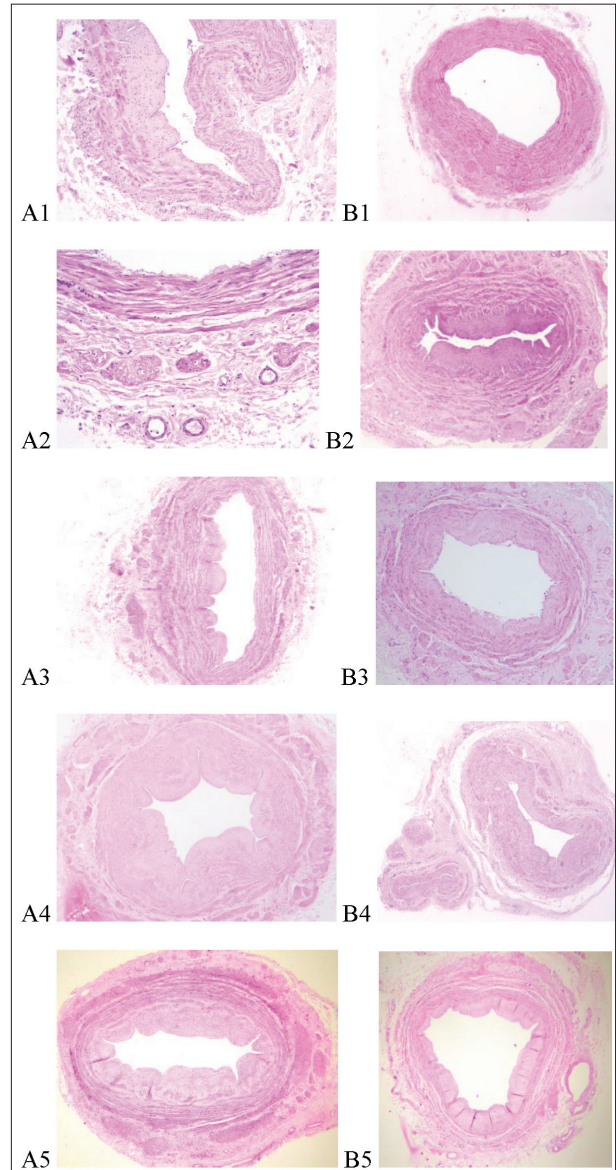
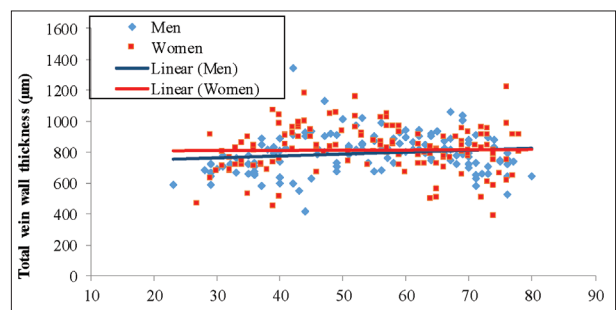


Figure 8. Cross sections of veins by sex and age groups, stained with the H&E method; A – male group [A1 – Group 1 (magnification: $\times 100$); A2 – Group 2 (magnification: $\times 200$); A3 – Group 3 (magnification: $\times 40$); A4 – Group 4 (magnification: $\times 40$); A5 – Group 5 (magnification: $\times 64$); B – female group [B1 – Group 1 (magnification: $\times 40$); B2 – Group 2 (magnification: $\times 50$); B3 – Group 3 (magnification: $\times 40$); B4 – Group 4 (magnification: $\times 40$); B5 – Group 5 (magnification: $\times 40$)]

**Figure 9.** Correlation between total vein wall thickness and age

Regression analysis did not confirm a significant relationship between total wall thickness, age, and sex, and Figure 9 shows that there is no trend in total wall thickness changes associated with aging, both in men and in women.

DISCUSSION

In general, a very small number of studies which, in an attempt to explain the difference in the flow rate of vein grafts in relation to sex, analyzed the morphometric structure of the vein wall, especially microscopically analyzing the morphometry of the wall and its elements.

Numerous authors in earlier studies explained the significant difference in the flow rate of vein grafts in women compared to men by the smaller average diameter of the recipient coronary arteries [4, 7]. However, comparing body surface area and body mass index (BMI) with the diameter of recipient coronary arteries, it was determined that there is no difference in relation to sex, meaning BMI is proportional to the diameter of coronary blood vessels regardless of sex [14].

In our study, the average age of the patients is significantly lower (54.42 years) compared to the analyzed studies that examined the morphometry of the venous conduit (60 years – Human et al. [15], and 62.9 years – Perek et al. [16]), but this finding cannot be taken into account because we are dealing with a selected and not a total group of patients who were operated on. Otherwise, the average age of those operated on in our region does not deviate significantly from the data in the literature [17].

In the morphometric analyses of veins used as coronary conduits, the transverse diameter of the veins, wall diameter, and lumen diameter were most often measured, and the results were presented descriptively, and poor post-operative results were associated with veins with a thick wall and a larger lumen [7, 18]. Studies that histomorphometrically determine the diameter of the vein wall and its layers are extremely rare, especially those that compare the structure of the veins in relation to sex.

Unlike us, Human et al. [15] found a significant difference in the average thickness of the vein wall in men (476.7 μm) compared to women (396.2 μm). In the study by Perek et al. [16], a significantly greater thickness of the vein wall was observed in women (359.1 μm vs. 469.3 μm). The significant difference in the thickness of the vein wall obtained in our study compared to earlier research can be explained by the difference in the vein treatment methodology when taking the sample. Namely, in our study, a native preparation was taken, without prior dilation and stretching, unlike other studies where the veins were dilated using different techniques before fixation, and it should be noted that due to the elastic properties of the vein wall, even very small differences in pressure can result in significant differences in diameters of both the lumen and the thickness of the vein wall.

By measuring the intimal layer of the vein wall, a significant difference was found in favor of men ($p = 0.005$), but, analyzing age groups in relation to sex, this difference is not linear. Regression analysis revealed a significant relationship between the thickness of the intimal layer, age, and sex. Our results correlate with those of Human et al. [15], which also found a significantly thicker intima in men.

The average thickness of the medial layer of the vein wall of all participants was $394.82 \pm 104.10 \mu\text{m}$, with a significantly higher thickness found in women, both in total ($388.42 \pm 100.55 \mu\text{m}$ vs. $311.22 \pm 92.98 \mu\text{m}$; $p < 0.001$), and

in relation to all age groups. Regression analysis determined a significant association between medial thickness, age, and sex, where each year of age is associated with a decrease in medial thickness by 2.411 μm ($p < 0.001$), and the trend of decreasing medial layer thickness is more pronounced in women. In the mentioned study by Perek et al. [16], a significantly thicker medial layer of the vein wall was observed in the group of patients with an occluded or severely damaged venous conduit (257.2 μm vs. 211.5 μm ; $p < 0.001$), and the logistic regression model indicates that hypertrophy of the medial layer represents one of the independent risk factors for the development of severe graft disease and poor outcome after coronary surgery in patients with venous aortocoronary bypass.

All previous findings have confirmed that the main reservoir of SMC is precisely in the medial layer of the vein wall. Proliferation and migration into the intimal layer of these SMC is the main cause of intermediate and late reduced flow or occlusion of the vein graft in coronary surgery [12, 13]. Comparing our results and those of Perek et al. [16], as well as the mentioned facts, it can be concluded that there is a direct correlation of the thickness of the medial layer with the results in coronary surgery, i.e., considering the results of our research, the greater thickness of the medial layer of the vein wall found in women can be the cause of significant difference in patency of vein grafts in women. From both public health and clinical perspective, our results underscore the importance of promoting timely cardiovascular prevention in women who – regrettably – as in other more developed countries present themselves later for any kind of revascularization, with a greater burden of disease and are often misdiagnosed due to our cultural and regional habits [19].

CONCLUSION

Unfortunately, there are very few histological morphometric studies of venous conduits in coronary surgery, especially those comparing in relation to sex, which we could compare with our results. More research is needed to determine the true causes of the different patency of vein grafts in relation to sex.

Our results may point to the conclusion that in women, especially younger and middle-aged women, due to a significantly thicker tunica media, the use of a venous conduit in coronary surgery should be avoided due to better medium-term and long-term postoperative results.

ACKNOWLEDGMENT

This paper presents part of the results from the dissertation: Živić SS. Immunohistochemical and morphometric specificity of the structure of the great saphenous vein as a cardiovascular conduit in relation to gender [dissertation]. Niš (Serbia): University of Niš, Faculty of Medicine.

Conflict of interest: None declared.

REFERENCES

1. Zivkovic I, Krasic S, Stankovic M, Milacic P, Milutinovic A, Zdravkovic D, et al. Influence of three different surgical techniques on microscopic damage of saphenous vein grafts: a randomized study. *Medicina*. 2023;59(2):217. [DOI: 10.3390/medicina59020217] [PMID: 36837419]
2. Sabik JF 3rd, Lytle BW, Blackstone EH, Houghtaling PL, Cosgrove DM. Comparison of saphenous vein and internal thoracic artery graft patency by coronary system. *Ann Thorac Surg*. 2005;79:544–51. [DOI: 10.1016/j.athoracsurg.2004.07.047] [PMID: 15680832]
3. Bassri H, Salari F, Noohi F, Motevali M, Abdi S, Givtaj N, et al. Evaluation of early coronary graft patency after coronary artery bypass graft surgery using multislice computed tomography angiography. *BMC Cardiovasc Disord*. 2009;9:53. [DOI: 10.1186/1471-2261-9-53] [PMID: 19995414]
4. Loop FD, Golding LR, MacMillan JP, Cosgrove DM, Lytle BW, Sheldon WC. Coronary artery surgery in women compared with men: analyses of risks and long-term results. *J Am Coll Cardiol*. 1983;1(2 Pt1):383–90. [DOI: 10.1016/s0735-1097(83)80064-3] [PMID: 6600758]
5. Tan ES, van der Meer J, Jan de Kam P, Dunselman PH, Mulder BJ, Ascoop CA, et al. Worse clinical outcome but similar graft patency in women versus men one year after coronary artery bypass graft surgery owing to an excess of exposed risk factors in women. *J Am Coll Cardiol*. 1999;34(6):1760–8. [DOI: 10.1016/s0735-1097(99)00404-0] [PMID: 10577567]
6. McLean RC, Nazarian SM, Gluckman TJ, Schulman SP, Thiemann DR, Shapiro EP, et al. Relative importance of patient, procedural and anatomic risk factors for early vein graft thrombosis after coronary artery bypass graft surgery. *J Cardiovasc Surg*. 2011;52(6):877–85. [PMID: 22051997]
7. Harik L, Perezgrovas-Olaria R, Jr Soletti G, Dimagli A, Alzghari T, An KR, et al. Sex differences in coronary artery bypass graft surgery outcomes: a narrative review. *J Thorac Dis*. 2023;15(9):5041–54. [DOI: 10.21037/jtd-23-294] [PMID: 37868858]
8. Antonopoulos AS, Odutayo A, Oikonomou EK, Trivella M, Petrou M, Collins GS, et al; SAFINOUS-CABG (Saphenous Vein Graft Failure—An Outcomes Study in Coronary Artery Bypass Grafting) group. Development of a risk score for early saphenous vein graft failure: an individual patient data meta-analysis. *J Thorac Cardiovasc Surg*. 2020;160(1):116–27. [DOI: 10.1016/j.jtcvs.2019.07.086] [PMID: 31606176]
9. Cheng Y, Ma X, Liu X, Zhao Y, Sun Y, Zhang D, et al. A novel risk scoring tool to predict saphenous vein graft occlusion after cardiac artery bypass graft surgery. *Front Cardiovasc Med*. 2021;8:670045. [DOI: 10.3389/fcvm.2021.670045] [PMID: 34458329]
10. Altarabsheh SE, Sheikh AM, Ilyas S, Raza S, Deo SV. Conduits in coronary artery bypass grafting. *AME Med J*. 2021;6:16. [DOI: 10.21037/amj-2020-abg-08]
11. Lehtinen ML, Harik L, Soletti G Jr, Rahouma M, Dimagli A, Perezgrovas-Olaria R, et al. Sex differences in saphenous vein graft patency: a systematic review and meta-analysis. *J Card Surg*. 2022;37(12):4573–8. [DOI: 10.1111/jocs.17195]
12. Ferreira DK, Petzold AP, Zawislak RB, Oliveira JRd, Wagner MB, Piantá RM, et al. Sex differences in outcomes of patients undergoing on-pump coronary artery bypass graft surgery. *PLoS One*. 2024;19(9):e0306902. [DOI: 10.1371/journal.pone.0306902]
13. Allaire E, Clowes AW. Endothelial cell injury in cardiovascular surgery: the intimal hyperplastic response. *Ann Thorac Surg*. 1997;63:582–9. [DOI: 10.1016/s0003-4975(96)01045-4] [PMID: 9033355]
14. Motwani JG, Topol EJ. Aortocoronary saphenous vein graft disease: pathogenesis, predisposition and prevention. *Circulation*. 1998;97(9):916–31. [DOI: 10.1161/01.CIR.97.9.916]
15. Human P, Franz T, Scherman J, Moodley L, Zilla P. Dimensional analysis of human saphenous vein grafts: implications for external mesh support. *J Thorac Cardiovasc Surg*. 2009;137(5):1101–8. [DOI: 10.1016/j.jtcvs.2008.10.040] [PMID: 19379974]
16. Perek B, Malinska A, Stefaniak S, Ostalska-Nowicka D, Mistowski M, Zabel M, et al. Predictive factors of late venous aortocoronary graft failure: ultrastructural studies. *PLoS One*. 2013;8(8):e70628. [DOI: 10.1371/journal.pone.0070628] [PMID: 23940610]
17. Mihajlović B, Nićin S, Čemerlić-Adić N, Pavlović K, Dodić S, Velicki L, et al. Trends of risk factors in coronary surgery. *Srp Arh Celok Lek*. 2010;138(9–10):570–6. [DOI: 10.2298/SARH1010570M]
18. Szpytma MM, Baker RA, Gimpel D, Newland RF, Lance DG, Rice GD, et al. Optimal conduit diameter selection in coronary bypass grafting using saphenous vein. *Heart Lung Circ*. 2024;33:898–907. [DOI: 10.1016/j.hlc.2024.01.035] [PMID: 38458931]
19. Parapid B, Kanjuh V, Kostić V, Polovina S, Dinić M, Lončar Z, et al. Women's health in Serbia – past, present, and future. *Srp Arh Celok Lek*. 2021;149(11–12):745–54. [DOI: 10.2298/SARH211208105P]

Морфометријске карактеристике велике сафенске вене као графта за хируршку реваскуларизацију миокарда у односу на пол

Саша С. Живић¹, Иван Николић², Марко Јовић², Владимир Петровић², Драган Ц. Богдановић³, Владимир Стојиљковић¹, Александар Каменов¹

¹Универзитетски клинички центар „Ниш“, Клиника за кардиохирургију, Ниш, Србија;

²Универзитет у Нишу, Медицински факултет, Катедра за хистологију и ембриологију, Ниш, Србија;

³Институт за јавно здравље „Ниш“, Ниш, Србија

САЖЕТАК

Увод/Циљ Значајна разлика у проходности венских коронарних графтова у односу на пол још увек нема јасно дефинисан узрок. Наше истраживање има за циљ да утврди евентуално постојање морфометријских разлика у зиду велике сафенске вене у односу на пол.

Метод Истраживањем је обухваћено 268 пацијената класификованих по полу у пет старосних група, којима је вршено морфометријско мерење зида велике сафенске вене.

Резултати У нашем истраживању није утврђена значајна разлика укупне дебљине зида вене између полова ($p = 0,11$), нити значајна повезаност између укупне дебљине зида, старости и пола. Просечна дебљина интималног слоја венског зида била је значајно већа код мушких испитаника ($p = 0,005$) а мултиваријантном регресионом анализом утврђена је значајна повезаност између дебљине интима, старости и

пола ($p < 0,001$). Медијални слој вене код жена био је значајно већи ($p < 0,001$), како укупно тако и у свим старосним групама. Мултиваријантна регресиона анализа је потврдила значајну повезаност између дебљине медије, старости и пола ($p < 0,001$). Дебљина адвентицијалног слоја била је значајно већа код мушкараца ($p = 0,031$), а утврђена је и значајна повезаност између дебљине адвентиције, старости и пола ($p < 0,001$).

Закључак Резултати нашег испитивања указују на постојање значајне разлике у зиду велике сафенске вене у односу на пол и старост испитиваних пацијената, што се може довести у везу са значајном разликом у проточности венских графтова у коронарној хирургији у односу на пол.

Кључне речи: кардиохирургија; венска морфометрија; проточност